

## Wonderland: The Hearth

Wonderland, our annual holiday storefront display, has been a tradition at the District Architecture Center since 2013, when we invited AIA | DC Members to present small-scale models of the built environment to create a festive holiday city around our HO Scale Electric Train Set. This year AIA | DC wanted to call on the community once more through a competition that would sponsor local designers to create a unique display for our storefront. The winners of the 2015 competition, Cooper Jones and Maureen McGee, are architects who moved to Washington from San Francisco this year. The husband-and-wife team collaborated on several design projects between 2013 – 2014, including two winter storefront installations for Faye's Video and Espresso Bar in the Mission District, San Francisco.

On view in the SIGAL Gallery storefront through January 4, *Wonderland: The Hearth* was conceived as an expression of the winter experience – a perfect symbol for this time of celebration and community. By using parametric techniques, the team developed a script to create a design that appears to gradually shift as you walk past the installation. The resulting effect pays tribute to fire as a key element of winter.



## 2015 WAF Year-End Highlights

2015 was a very good year at the Washington Architectural Foundation! New programs were launched with the help of exciting new partnerships. Old favorites grew to serve more metro DC residents, both children and adults. Long-time strategies were evaluated and new approaches developed. These are just a few of this year's highlights....

**Architecture in the Schools** has enriched the learning experience of nearly 17,000 children in more than 650 DC Public School classrooms since 1992, improving reading, problem solving, and STEM (Science, Technology, Engineering, and Math) skills. This year alone AIS reached close to 1000 students, sending more than 100 volunteers into 38 classrooms. In June WAF staff had an opportunity to meet with Chancellor Kaya Henderson and her senior staff which led to cooperative work on curriculum development for new DC Public Schools programs.

**Design in Action**, which matches 11th graders in DC Public Schools with mentors in top local architecture firms for a week in spring break, has grown from 6 students when it began in 2012 to 32 students and firms this year.

A new venture with a new partner saw the launch of the **Design Like a Girl** initiative with the Girl Scout Council of the Nation's Capital, the largest Girl Scout Council in the country. Design Like a Girl enhances STEM skills and introduces girls to female role models in architecture, engineering, and construction who can have an impact

on their future as potential leaders in these growing, but still male-dominated, fields. A pilot summer day camp for 8-12 year olds in August drew 32 children. A series of workshops for slightly older girls begins in January and culminates with demonstrations of the girls' work at the USA Science and Engineering Festival in April. Both programs had long waiting lists.

**Canstruction** moved from the end of summer to Thanksgiving Week. Read more in CANgratulations CANstruction!

Out-of-school programs at the Design Architecture Center became increasingly popular, as did tours and programs offered during Architecture Week in April. Three students were awarded scholarships to begin their university architectural education. A review of the pro bono Design Services program brought experts from other cities and consumer network representatives together to explore options for shaping the future of how we make high-quality design available to our local nonprofit community.

It was a busy year with a lot of good news to share, much success, and many challenges still to meet. The generous support the Washington Architectural Foundation receives from the local foundation and corporate community, as well as AIA | DC Chapter members and other individuals who care about our built environment, is vital to WAF's ability to "make a difference by design."



Svetlana Legetic  
(@svetlanabyt)

### Exhibition Corner:

#### #iseeDC2015

Exhibition on view January 13 through February 20, 2016

Love photography? Enjoy Instagramming your life experiences? Visit the District Architecture Center's exhibition celebrating winning photos from the #iseeDC2015 Instagram photo contest organized by the AIA | DC Design Excellence Committee. These juried photos capture unique points of view throughout our nation's capital from October to November of this year. The Committee's aim for the contest—and exhibition—is to connect the community with architecture. Drop in and get inspired to capture your own architectural snapshots.

## AIA|DC 2016 Board of Directors

Sean Stadler, AIA	President	Marcy Giannunzio, AIA	Director at Large	Yiselle Santos, Assoc. AIA	Director at Large
Carolyn Sponza, AIA	Vice President/President Elect	Rob Holzbach, AIA	Director at Large	Bill Spack, AIA	Director at Large
Joe Sacco, AIA	Treasurer	Diana Horvat, AIA	Director at Large	Todd Steighner, AIA	Director at Large
Marc Fairbrother, AIA	Secretary	Franklin Kaye, AIA	Director at Large	Luis Velez-Alvarez, AIA	Director at Large
Steve White, AIA	Immediate Past President	Douglas Palladino, AIA	Director at Large	Mary Fitch, AICP, Hon. AIA	Executive Director
Jason Arnold, AIA	Director of Public Architects				

**AIA|DC News** is published monthly on the by the Washington Chapter of the American Institute of Architects and is distributed to over 2,200 AIA|DC members and corporate and professional affiliates in the Washington, DC metropolitan area. The News is printed on Rolland Enviro 100, a 100% post-consumer waste paper.

The editorial deadline for each issue is the first day of the preceding month. Submissions received after this date may be held for publishing due to spatial

limitations. Editorial contributions and letters are welcome. We reserve the right to edit submissions. Opinions expressed by contributing authors do not necessarily reflect the policies or views of the Washington Chapter/AIA, or its officers, directors, or employees.

#### EDITOR

Asya Snejnevski

#### MEMBER NEWS ITEMS

newsletter@aiadc.com

#### AIA|DC STAFF

Mary Fitch, AICP, Hon. AIA  
Executive Director  
Katherine Adams  
Development Director  
Scott Clowney  
Exhibitions Manager  
Melody Harrison  
Member Service  
and Committee Liaison Director  
Laura Headrick  
Events Manager

Sinlaire Erdwien  
Education and Committees Coordinator  
Bradley Johnson  
Digital Information Coordinator  
Beth Judy  
Foundation Programs Manager  
Asya Snejnevski  
Communications Coordinator  
Katie Spencer  
Programs Director

#### ADVERTISING SALES MANAGER

Jody Cranford 800-818-0289  
jcranford@aiadc.com



Judges: (pictured above left to right with Mary Fitch - Executive Vice President, WAF) Michael Armstrong - CEO, NCARB, Eun Yang - Anchor/Reporter, NBC4, Tom Mayes - Vice President and Senior Counsel, National Trust for Historic Preservation



DeCANstruction

## CANgratulations to the Winners of CANstructionDC 2015!

Congratulations to all of the teams who participated this year for collecting a total of 68,313 pounds of food plus \$5,070 in “votes” for the Capital Area Food Bank!

### Juror’s Favorite/Best in Show

CAN-estoga Wagon – Grimm + Parker Architects

### Structural Ingenuity

Dulles: 2 Pringles to Paradise – KCCT

### Best Use of Labels

OutSMARTing Hunger  
– YCF The Young Constructors Forum of Associated General Contractors of Metro DC

### Best Meal

Ameri-CAN Bistro – WDG Architecture

### Best Expression of the Theme

CAN-nook Chopper to the Rescue – AECOM

### Honorable Mention/Most Elegant Solution

Can2Go: Driving Hunger Out of DC! – Barnes Vanze Architects

### Honorable Mention/The Crowd Pleaser

The Mayflower: Voyage to End Hunger – HARTMAN-COX ARCHITECTS

### Most Cans

Inter-Goya-lactic – Associated Builders and Contractors Metro Washington Student Chapter

### People’s Choice Award

The Mystery Machine & the Capital Area Food Bank Phantom – Hickok Cole Architects / Ehlert Bryan

### Speedy Award/The Team to Finish Building First

The Flux CANpacitor – SmithGroupJJR / DPR Construction

CANstruction aims to raise awareness about hunger in DC. CANstructionDC is a creative design-build competition that benefits the Capital Area Food Bank through donations of canned goods. Through this year’s theme of transportation our 26 teams of volunteers from local architecture and engineering firms with the help of the public raised a total of 69,600 meals (27,600 more than in 2014!) that were donated to the Capital Area Food Bank.

**Thank you to our judges and our generous sponsors for supporting CANstruction, we couldn't have done it without you!**

**Sponsored by:** Bank of America Small Business, Erin Kelleher Photography, Grunley Construction Company, Inc., National Building Museum, NCARB, NRI, Safeway, TW Perry

**Organized by:** Washington Architectural Foundation

## Russell V. Keune, FAIA, 1938 - 2015



Russell V. Keune, FAIA  
Courtesy of National Park Service/Russell V. Keune, FAIA

**Russell V. Keune, FAIA** received his B. Arch. and M. Arch. from the University of Illinois, and spent his life making an impact on historic preservation, restoration, and architecture around the US and abroad. Through tenures at the National Park Service, the National Trust for

Historic Preservation, United States Committee / International Council on Monuments and Sites (US/ICOMOS), Professional Practice Commission of the International Union of Architects, and the American Institute of Architects as the Director of International Affairs, he has touched many people with his knowledge, humor, and spirit.

Some of Keune’s major accomplishments included working on the National Historic Preservation Act in both the passing of the law and its implementation around the country with the National Register of

Historic Places, spreading knowledge about historic preservation and building codes to architects and creating historic districts around the US at the National Trust, creating historic preservation plans for several countries in Asia, holding the General Assembly in the US for the first time and publishing preservation work that had been done in the US with US/ICOMOS, and establishing new AIA chapters abroad. We thank Russell Keune for his great contributions to the architecture community; he will be sorely missed.

AIA | DC members may submit "Member News" items to [newsletter@aiadc.com](mailto:newsletter@aiadc.com).

**B**



David Marks, AIA



Elise Robinson, AIA

**Bowie Gridley Architects** have several new positions. Principal Richard Salopek, AIA and Associate **Elise Robinson, AIA** will share the role of Director of Building Information Modeling (BIM). As co-directors, they will be responsible for furthering the integration of BIM technology into BGA's practice by refining standards, training, and software implementation. Associate **David Marks, AIA** will assume the role of Director of Building Technology, providing leadership in the implementation of building science technologies including building envelope, materials, and assembly innovations. These new roles will serve as complement to BGA's existing quality control and assurance practices—creating client value and technical excellence.



Elk Run Ridge by Carter + Burton Architecture, "Architecture Now! Vol. 10"

**Carter + Burton Architecture's** newest project, Elk Run Ridge, was published as one of only three house designs featured from the U.S. in "Architecture Now! Vol. 10" edited by Philip Jodidio and published by Taschen. Carter + Burton has been specializing in high end Modern design for new construction and renovations in Virginia, New York and Washington, DC.

**C**



Richmond Olympic Oval, CannonDesign

The Richmond Olympic Oval, the signature venue from the 2010 Vancouver Olympic Winter and now a multi-use community recreation center and sports venue designed by **CannonDesign**, led by Principal **Ken Wiseman, AIA**, has received the All Time Award from the International Association of Sports and Leisure Facilities (IAKS) and the International Olympic Committee (IOC) – an award reserved for landmark sports facilities from the past half-century. The All Time Award is being issued in conjunction with IAKS 50th anniversary and will not be awarded again until 2065. The Oval is one of just 10 facilities to receive the honor – and the only award-winning venue from North America.



Heather Daley Rao, AIA, LEED-AP; Angela Yu, AIA; and Nandor Mitrocsak, AIA. Cunningham | Quill Architectus

**Cunningham | Quill Architects** is pleased to announce the promotions of **Heather Daley Rao, AIA, LEED-AP**, **Nandor Mitrocsak, AIA** and **Angela Yu, AIA**. We are proud to recognize their professional accomplishments and commitment to design excellence. Each continually demonstrates vision, expertise and a collaborative philosophy to provide Cunningham | Quill clients with exceptional award-winning projects. Heather Daley Rao, AIA, LEED-AP has been

promoted to Associate Principal. Nandor Mitrocsak, AIA and Angela Yu, AIA have been promoted to Associate.

**D**

**Dewberry**, a privately held professional services firm, has acquired the Wilson Architectural Group. Headquartered in Houston, Texas, Wilson is a nearly 40-person architectural firm with a portfolio of healthcare, corporate and commercial, industrial, sports and recreation, laboratories, and civic buildings in Houston and throughout Texas. During integration, the Houston office will be known as and will do business as Dewberry | Wilson.

**G**

Registered architect **Thomas Massey, AIA, LEED AP**, has joined **Gannett Fleming Architects, Inc.**, serving as vice president and facilities area manager. He is responsible for overall project management, design and business development for the practice, with a special focus on the Federal government and the Washington, DC metro area. Massey brings 30+ years of successful design and planning experience throughout the United States. His extensive Federal government work includes the LEED®Platinum-rated GSA New Federal Office Building in Miramar, Florida, and the U.S. Army Corps of Engineers Advanced Research Center in Picatinny Arsenal, New Jersey.

**KH KEAST & HOOD**  
STRUCTURAL ENGINEERS



Embassy of India Restoration | Washington, DC

New Construction • Renovation • Addition • Adaptive Reuse  
Historic Preservation • Masonry Stabilization • Structural Intervention

[www.keasthood.com](http://www.keasthood.com)  
Philadelphia | Washington



**Industry Leaders in Engineering Services**

With a talented and dedicated staff of over 1,100 professionals specializing in mechanical, electrical, plumbing, fire protection, civil, and structural engineering, traffic engineering, survey/mapping, and program management, we can meet and exceed our clients' expectations on any size project.



Learn more at [www.gpinet.com](http://www.gpinet.com)

Building Assessments || Construction Documents || Peer Review || Continuing Education  
Sustainable Design || LEED || Green Globes || Energy Modeling || Commissioning  
Locations throughout the US

**CADD**  
CADD MICROSYSTEMS

**Realize your full potential with BIM**

We can help you get the ROI you want from your design processes and software, like Autodesk Revit, Navisworks and Bluebeam.

**We're here to help you:**

- ⊕ Make the transition to 3D and BIM, to leverage the benefits of modeling
- ⊕ Maximize the benefits of the technology you've purchased
- ⊕ Evolve workflows and processes to use your model data more efficiently
- ⊕ Streamline workflows and create design standards
- ⊕ Seamlessly update processes and roll out learning paths

Get the unrivaled expertise of CADD Microsystems on your team, and we'll bring with us our decades-long partnerships with industry leaders like Autodesk, Bluebeam and Global eTraining.

**CALL:** 800.550.CADD | **CLICK:** [www.caddmicrosystems.com/tpa](http://www.caddmicrosystems.com/tpa)



## GHT Limited

Principal Ray Smith, CCP has been elected to the Examination Committee of the Building Commissioning Certification Board (BCCB). The committee consists of national subject matter experts who collaborate and employ best practices to create the Certified Commissioning Professional (CCP) examination forms. Per the Building Commissioning Association (BCA), the BCCB was formed in 2004 as an administratively independent arm of the BCA for the purpose of recognizing building commissioning professionals who meet the standards of the BCA.

GHT has welcomed 14 new team members to the MEP consulting engineering firm in the last six months. GHT President Paul O'Brien remarks, "These talented individuals represent a broad array of expertise, encompassing mechanical, electrical, and plumbing engineering disciplines; operations and energy services (OES); and Revit® MEP BIM software. GHT has achieved growth in each of its three studios – interiors, building systems, and OES – in 2015 through a focus on client relationships and technical innovation. The resulting increase in staff has expanded GHT's capacity to help our clients improve the efficiency and value of their assets in the built environment."

## Gordon + Gordon Architecture

Founding Principal, Harry Gordon, FAIA has been selected as a LEED Fellow by USGBC and Green Business Certification, Inc. Harry was also the inaugural recipient of the Greg Franta, FAIA Memorial Award for High Performance Sustainable Design, awarded by the Sustainable Buildings Industry Council.



Harry Gordon, FAIA, Gordon + Gordon Architecture

## Griz Dwight, AIA of GrizForm

**Design Architects** designed the Farmers Restaurant Group's Founding Farmers Tysons restaurant to represent rooms and areas typically found in a classic Virginia farmhouse. In both subtle and more visible ways, guests experience different "microclimates" that resemble a barn, front porch, kitchen, dining room, formal space, living room, and a bedroom as they move through the restaurant. Unique design elements in the restaurant include: commissioned artworks and installations by artists such as hand whittled creatures, farm scene vignettes, a quilted colonial flag, a phone booth for guests to make calls in private, as well as custom designed furniture.

Boston Properties has awarded **Grunley Construction Company, Inc.** a contract for the renovation of 1330 Connecticut Avenue NW, Washington, D.C. The renovation of the 10-story, Class A office building located in Dupont Circle will include upgrades and improvements for the building façade as well as new roofing, windows, exterior landscaping and pavers. The building will remain occupied throughout the construction by a law firm tenant, and the project is expected to have a two-year duration.

## K

Structural engineering firm **Keast & Hood** has opened an office in Charlottesville, Va., led by Associate Craig D. Swift, PE, SE, LEED AP. The Charlottesville location responds to a growing business presence and client base throughout Virginia, where Keast & Hood provides structural engineering for new construction and historic preservation projects.

**Keast & Hood** worked on several projects that were honored this year with various awards. The Howard Hughes Corporation Rouse Building was recognized with a Good Design = Good Business Honorable Mention in the AIA Baltimore Excellence in Design Awards. 3737 Science Center was recognized as with a Health Care Award of Merit in ENR Mid Atlantic's Best Project Awards and as a finalist in the Delaware Valley Green Building Council Groundbreaker Awards for sustainable design. The Rouse Building and 3737 Science Center also earned the Urban Land Institute's Willard G. "Bill" Rouse Awards for Excellence.



Craig D. Swift, PE, SE, LEED AP of Keast & Hood

The Karabots Pavilion at The Franklin Institute was named Project of the Year by the ACE Mentor Program of Eastern Pennsylvania. Chestnut Hill, PA, inducted two Keast & Hood projects its Architectural Hall of Fame: The Vanna Venturi House and the Margaret Esherick House.

Associated Builders and Contractors, Inc. Eastern Pennsylvania Chapter honored three Keast & Hood projects in its 25th anniversary Merit Construction Awards of Excellence. The Institutional Excellence Winner went to the Shipley School Student Commons and Arts Center. The Institutional Merit Winner went to Dana Hallowell Residence Hall at Swarthmore College. The Adath Israel Synagogue Renovation was named Restoration/Renovation Merit Winner.

## L

**Landis Architects/Builders** welcomes project designer Chris Williams. He joins an architect-led, six-person design department. He has 25 years of experience in residential construction, including designing/estimating small kitchens to \$15 million new homes. He enjoys working with 3D modeling because it provides realistic views for clients and it offers seamless coordination from design to construction. He has a degree in architecture from the University of Maryland.



Chris Williams, Landis Architects/Builders

## O

**Oehme, van Sweden** principals recently presented about their history and creative ideas at two events. Principal Sheila Brady, FASLA, discussed her innovative designs for the New York Botanical Gardens' (NYBG) Native Plant Garden, with Susan Cohen, ASLA, in the lecture Finding Your Muse: Inspiration and the Creative Process at NYBG. The National Building Museum hosted OvS Principals Sheila Brady, Lisa Delplace, and **Eric Groat, Assoc. AIA** in a panel discussion Spotlight on Design: Oehme, van Sweden with an inside view on the firm's legacy as well as the current studio's everyday operations.

## P

**Perkins+Will** welcomes several new members to the firm. **Jeff Davenport** joins Perkins+Will as a Principal and Middle East Healthcare Director helping to grow the firm's healthcare practice worldwide, **John Grounds, AIA, LEED AP** as a Senior Associate

# Real or 3d?

*We Help Bring Your Visions to Life!*  
email: [info@3dstormstudio.com](mailto:info@3dstormstudio.com)



[www.3dstormstudio.com](http://www.3dstormstudio.com)

**3D Virtual Staging**  
**3D Conceptual Designs**  
**3D Architectural Renderings**  
**3D Walkthrough & Flyby Animations**

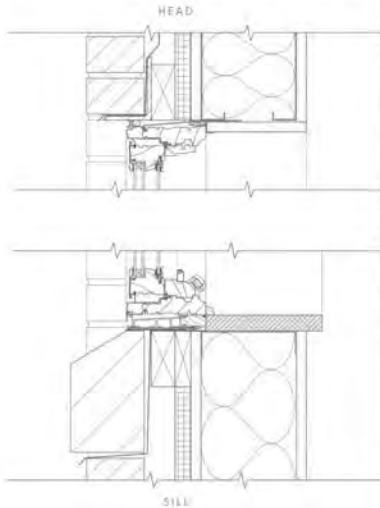
We Provide High Quality 3d Architectural Rendering & Animation Services in Metro DC

**3DSTORMSTUDIO**  
ARCHITECTURAL RENDERING AND COMPUTER GRAPHICS SERVICES  
1050 Connecticut Avenue, NW, 10th Floor, Washington, DC 20036

**Call 571.243.0236**



TECHNICAL  
CAPABILITIES.



MIDTOWN COMMUNITY  
ELEMENTARY SCHOOL  
NEPTUNE TOWNSHIP, NJ  
SSP ARCHITECTURAL GROUP

EDUCATION

CREATIVE  
POSSIBILITIES.



Pella Windows & Doors

Timothy R. Allen

12100 Baltimore Avenue, Suite 1

Beltsville, MD 20705

Cell: 301-675-9324

Phone: 301-957-7000

Email: [tallen@kc-pella.com](mailto:tallen@kc-pella.com)

[pellacommercial.com](http://pellacommercial.com)

See both sides of this story at [pellacommercial.com/mces](http://pellacommercial.com/mces).



COMMERCIAL  
SOLUTIONS

© 2014 Pella Corporation

**BEEN HERE FOR 130 YEARS. BE HERE FOR AT LEAST 130 MORE.**

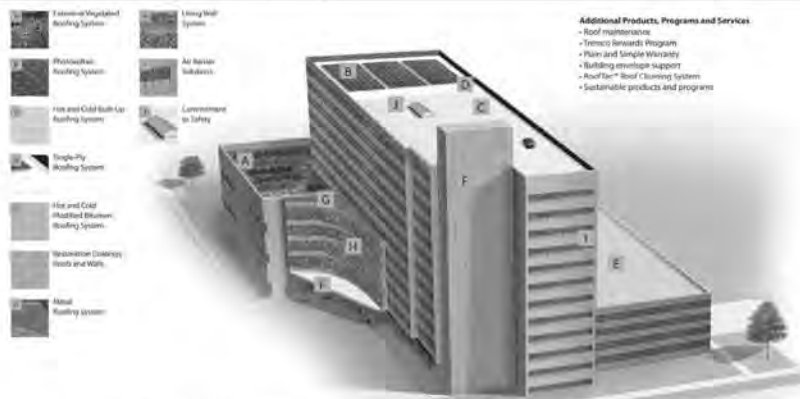


National Building Museum  
Washington, DC



[www.pvbrick.com](http://www.pvbrick.com)  
301.309.9600

**BUILD WITH BRICK.**



## Resilience Starts At The Top. With Tremco, It Doesn't End There.

Our commitment to resilience reflects an 80-plus-year philosophy of extending buildings' lives through restoration and retrofitting.

**From the Top:** Our vegetated, photovoltaic and white reflective built-up roofs, coatings and single-ply membranes do more than securely weatherproof your facility. They can help facility managers and owners operate more resilient buildings, with improved energy and water management and lower carbon output. Using recycled content and asbestos-free materials in our roofing systems' construction makes them even friendlier to the environment.

**And All Around:** But that's just the roofs. We have solutions to improve the resilience and longevity of the entire building envelope – walls, foundations, façades, controls and much more – through general contracting, preventive maintenance, sealants and weatherproofing, all of which can help make your buildings less expensive to operate.



[www.tremcoroofing.com](http://www.tremcoroofing.com)  
1.800.562.2728

For more information, contact: Marty Jakovics, CSI, CDT, Tremco Roofing and Building Maintenance  
Cell: 443-928-9173 • Email: [mjakovics@tremcoinc.com](mailto:mjakovics@tremcoinc.com)

©2015 Tremco Incorporated.





“I was a **practicing architect** for over 20 years when I joined Forrester. That made me a fish out of water in some ways, but the shifting challenges, increased responsibilities and the chance to grow professionally has kept the work fresh. As an architect, I have been able to take on unique roles within the company like creating a more **collaborative design build practice**, expanding **preconstruction services** and developing **innovative quality assurance review procedures**.”

- **Victor Bonardi** AIA, DBIA, LEED AP  
Face of Forrester since 2000

**KEEP BUILDING.**

Read more about the Faces of Forrester at  
[www.forresterconstruction.com](http://www.forresterconstruction.com)



Ballou Senior High School, Perkins+Will and Senior Project Manager focusing on healthcare projects. The firm congratulates **Jon Penndorf, AIA, LEED AP BD+C**, for being elected to the AIA National Strategic Council as the regional representative for the Mid-Atlantic Region.

Perkins+Will recently won four design awards: Tinkham Veale University Center, Case Western Reserve University, AIA | DC, Merit Award in Architecture; Ballou Senior High School, NAIOP Maryland/DC Chapter, 2015 Award of Excellence, Best Institutional Facility; Nixon Peabody Law Offices, NAIOP Maryland/DC Chapter, 2015 Award of Merit, Best Interiors Professional Service/Institutional Space over 25,000 SF; Kimball Office, Washington, DC Showroom,



**Jeff Davenport, Principal and Middle East Healthcare Director, Perkins+Will**

ASID Washington Metro Chapter, 2015 Design Excellence Award, Commercial Retail. Congratulations to the teams!

**Edwin Agudelo, AIA**, Associate Principal of **PGAL** to spoke at Architecture Exchange East on November 5th in Richmond, Virginia. Agudelo has served as Senior Project Designer on a number of the firm's high profile aviation projects shed light on "Visual Souplesse and the Architecture of Movement". His portfolio includes Los Angeles International Airport's Terminal 1 Modernization, Newark Liberty's Terminal A Redevelopment, Boston-Logan's Consolidated Rental Car Facility, and Las Vegas' McCarran International Airport's Terminal 3.

**S**

**Skidmore, Owings & Merrill LLP (SOM)**

Effective November 1st, **Kristopher Takács, AIA**, is leading the firm's Washington, DC practice. In this role, Takács will oversee a reorganization and expansion of the office to deliver architecture, planning, interiors, and engineering services in the District and mid-Atlantic region. Formerly based in SOM's New York City office since 2004, Takács is recognized for his leadership of award-winning projects throughout the United States, Middle East, India, and China, encompassing large-scale, mixed-use urban development, commercial and residential towers, ground transportation facilities, and urban designs for campuses, districts, and cities.



**Kristopher Takács, AIA, SOM**

## AIA | DC CALENDAR

### Lunchtime Learning: Vegetated Roof System Assembly Design

**Date:** Friday, January 8  
**Time:** 12:00PM - 1:00PM  
**Location:** District Architecture Center, 421 7th Street, NW

**Sponsored by:** Tremco Inc. 1.0 HSW | LU. *Fees: Free for AIA & DAC members; \$25 for Non-members. Registration required.*

### Your City, Your Architects: Knowing the Past to Design the Future

**Date:** Tuesday, January 26  
**Time:** 6:30PM - 8:00PM  
**Location:** District Architecture Center, 421 7th Street, NW

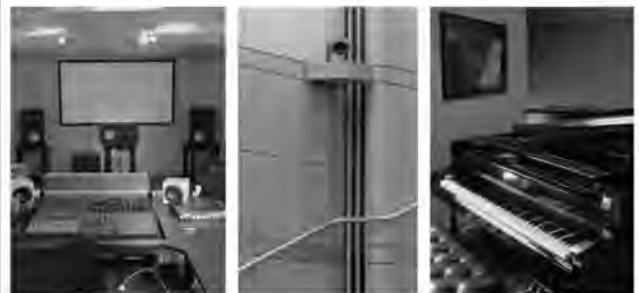
**Presented by:** Mark McInturff, FAIA - McInturff Architects.  
**Organized by:** AIA | DC and ICAA Register. 1.5 LUs. *Fees: \$15 for students & Assoc. AIA members; \$20 for AIA, DAC, and ICAA members; \$40 for non-members. Registration required.*

Check out the online calendar at [aiadc.com/calendar](http://aiadc.com/calendar) for a complete list of upcoming events.

## TECHNICAL SYSTEMS CONSULTING

**Understanding the Technology is the Starting Point**

Over 30 years designing and building professional production facilities and technical systems, plus fluency in residential and commercial architecture and environments. Across A/V, network, RF, control, power, acoustics and related areas, LTS can help put the right ideas in the right places.



Project technical management  
Determine client requirements  
Write specifications  
Evaluate proposals  
Training/Explanation/Oversight


Liaison to trades & vendors  
Troubleshooting/Analysis  
Legacy equipment interfacing  
Custom electronic design

Vectorworks user

Advice and perspective for integrating technology in residential and commercial projects of all types

**Lab Tech Systems**

Eric Wenocur Olney, MD 301-438-8270 [lab-tech-systems.com](http://lab-tech-systems.com)




MAHAN HALL, US NAVAL ACADEMY  
NEW SLATE AND COPPER ROOFING

*Wagner Roofing is proud of its 101 years of quality service on historic and residential properties.*

- Commercial & Residential
- Copper, Slate & Tile
- Ornamental Metal
- Gutters & Downspouts
- Flat Roofing
- Historic Restorations


**(301) 927-9030**  
**WAGNERROOFING.COM**

# HENRY ADAMS

CONSULTING ENGINEERS

MECHANICAL, ELECTRICAL, & PLUMBING ENGINEERS

11th & M St. | Tori Gallas and Partners



**Not All Mechanical Designs Are Created Equal**

1090 Vermont Avenue, NW, Suite 230 | Washington, DC 20005  
 (202) 450-5798 | [www.HENRYADAMS.com](http://www.HENRYADAMS.com)

# IS THERE A HOLE IN YOUR PLAN?



Before you get started on your next project, make the decision to incorporate natural gas into your design plan. In addition to offering a host of resources, our teams possess the technical skills to understand your design requirements and will give you the solutions you need—without compromising aesthetics or functionality. Make your next project the best it can be. Choose gas.

**BuildSmartChooseGas.com**





A place where old world craftsmanship and cutting edge technology meet to create a new standard of high-end windows & doors for discerning clientele.

[www.lepagemillwork.com](http://www.lepagemillwork.com)



1.888. TW.PERRY [www.twperry.com](http://www.twperry.com)



**TW Perry Architectural Window Consultants**

*....for a well informed decision*

[windowsmetrodc@twperry.com](mailto:windowsmetrodc@twperry.com)

BALTIMORE, MD — CHEVY CHASE, MD — GAITHERSBURG, MD — LEESBURG, VA — SPRINGFIELD, VA