



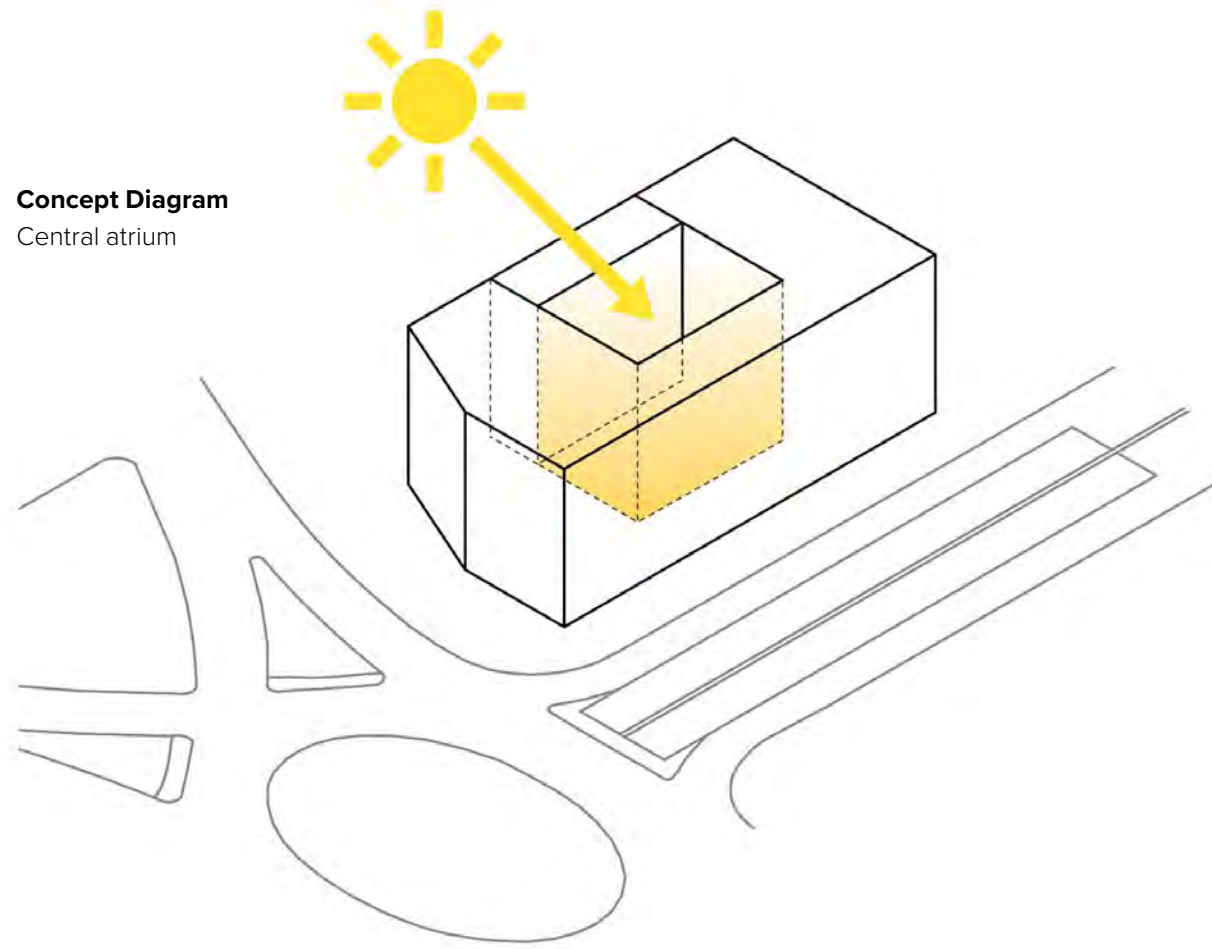


The design exhibits a striking tectonic quality where large shadow line joints define a series of aggregated forms, which combine to create a dialogue between positive and negative space.

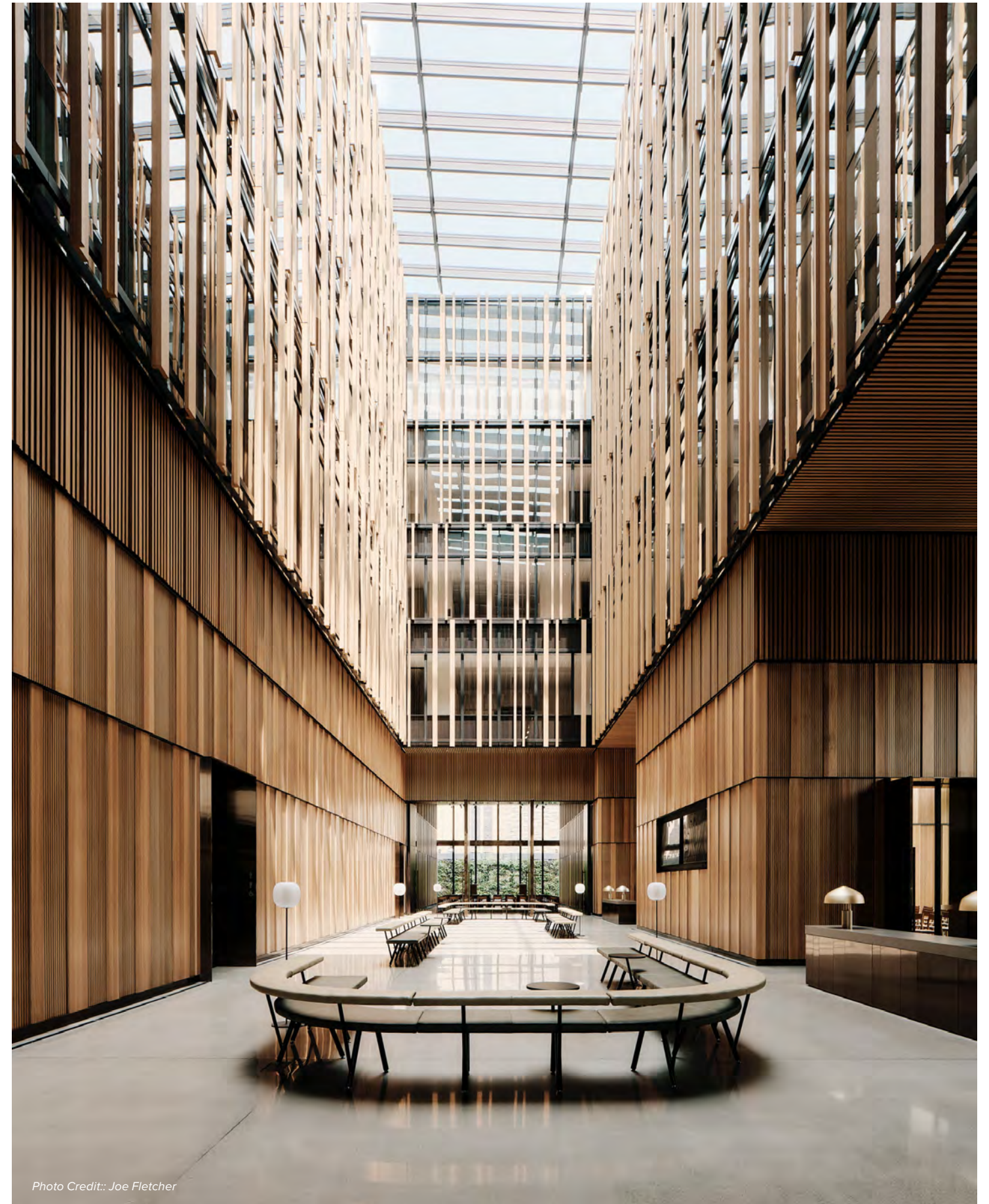


Photos Credit: Ron Blunt

Concept Diagram
Central atrium



The representational public realm consists of a sequence of waiting areas, gallery spaces, and function areas.



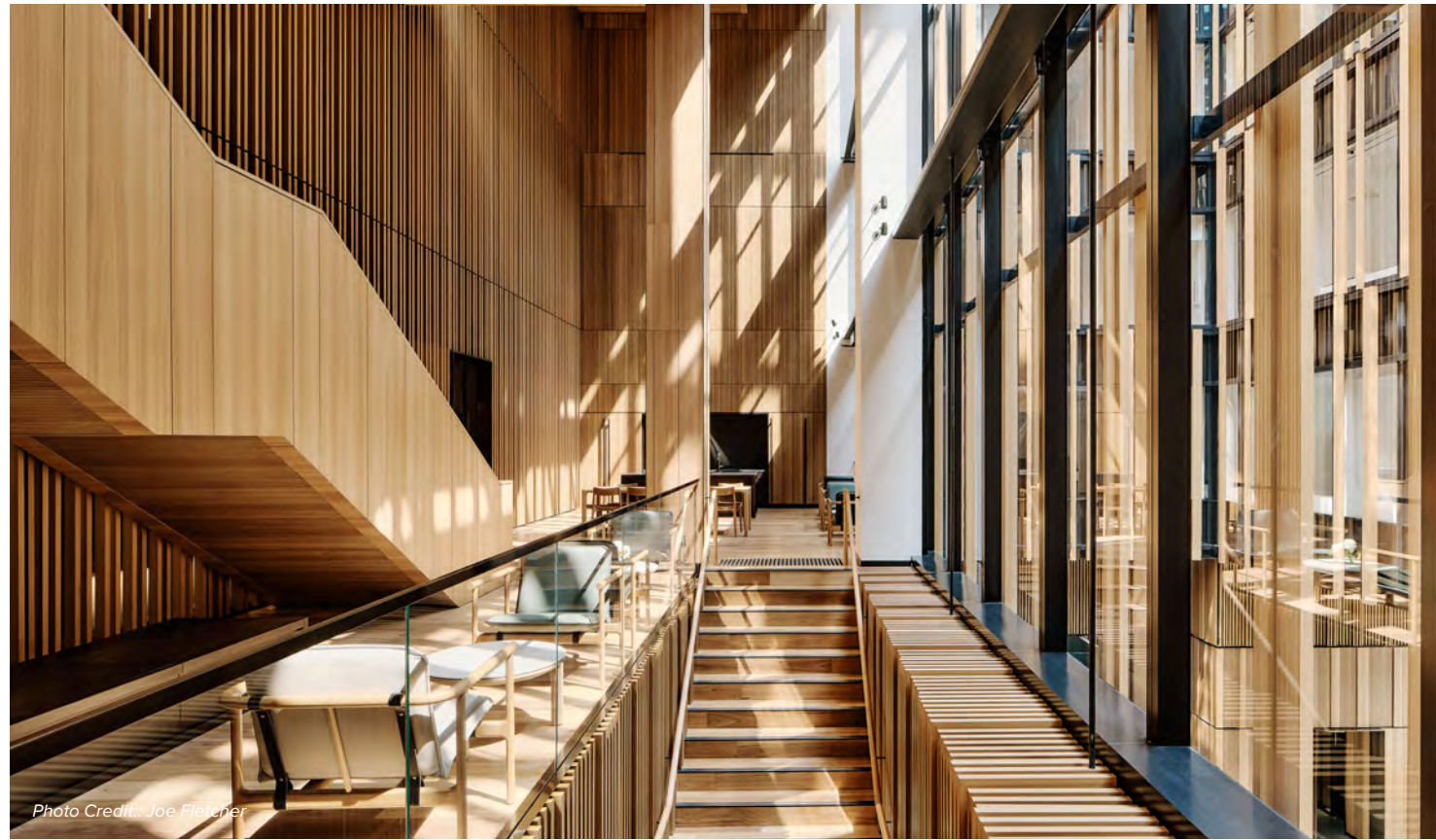


Photo Credit: Joe Fletcher

A key element of the design is the staff hub, a series of breakout spaces vertically linked by a feature stair within the controlled access zone, encouraging staff to move easily between departments and social spaces. This environment is an open, warm, light-filled space to naturally gather and engender workplace cohesion.

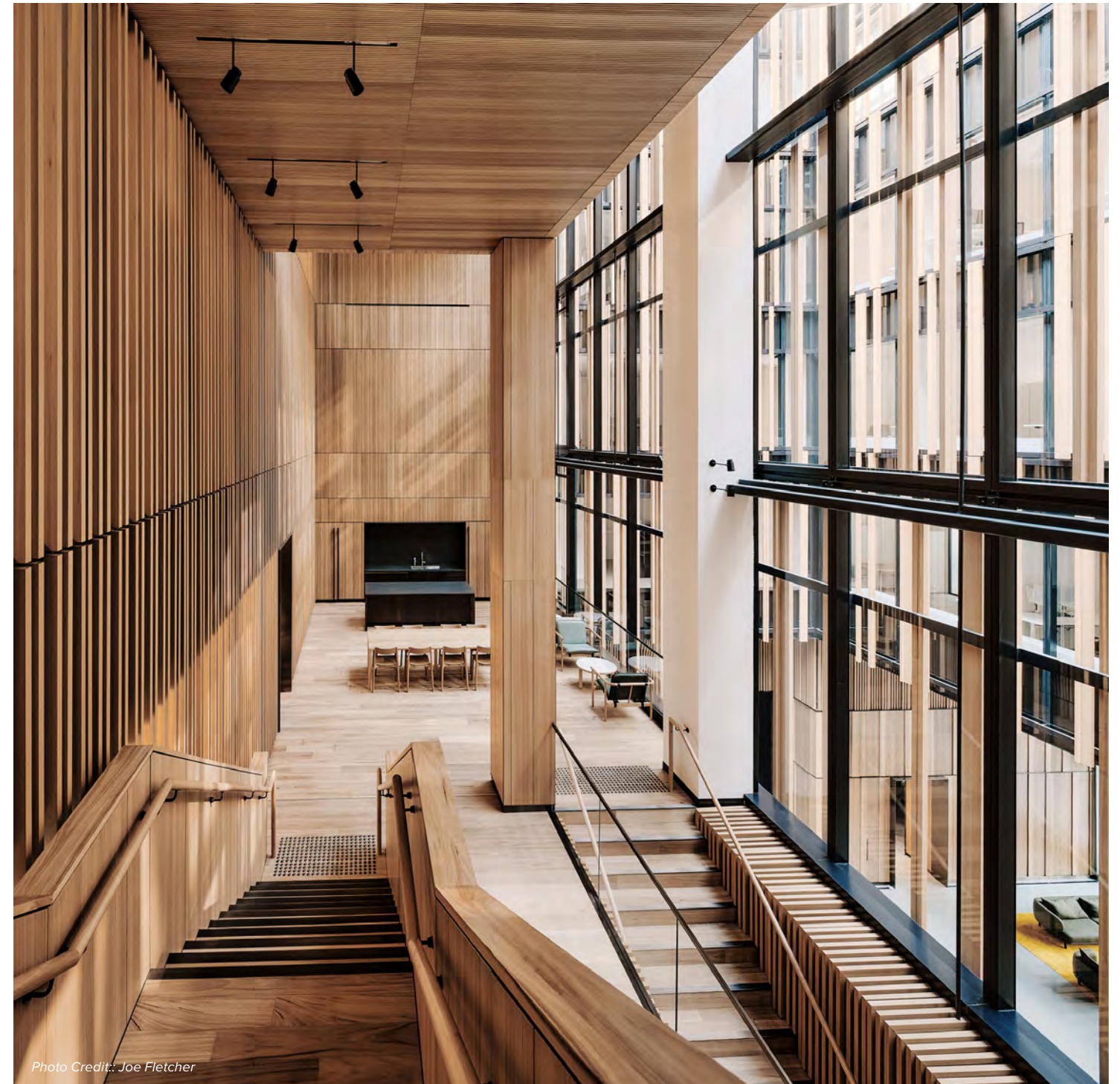


Photo Credit: Joe Fletcher

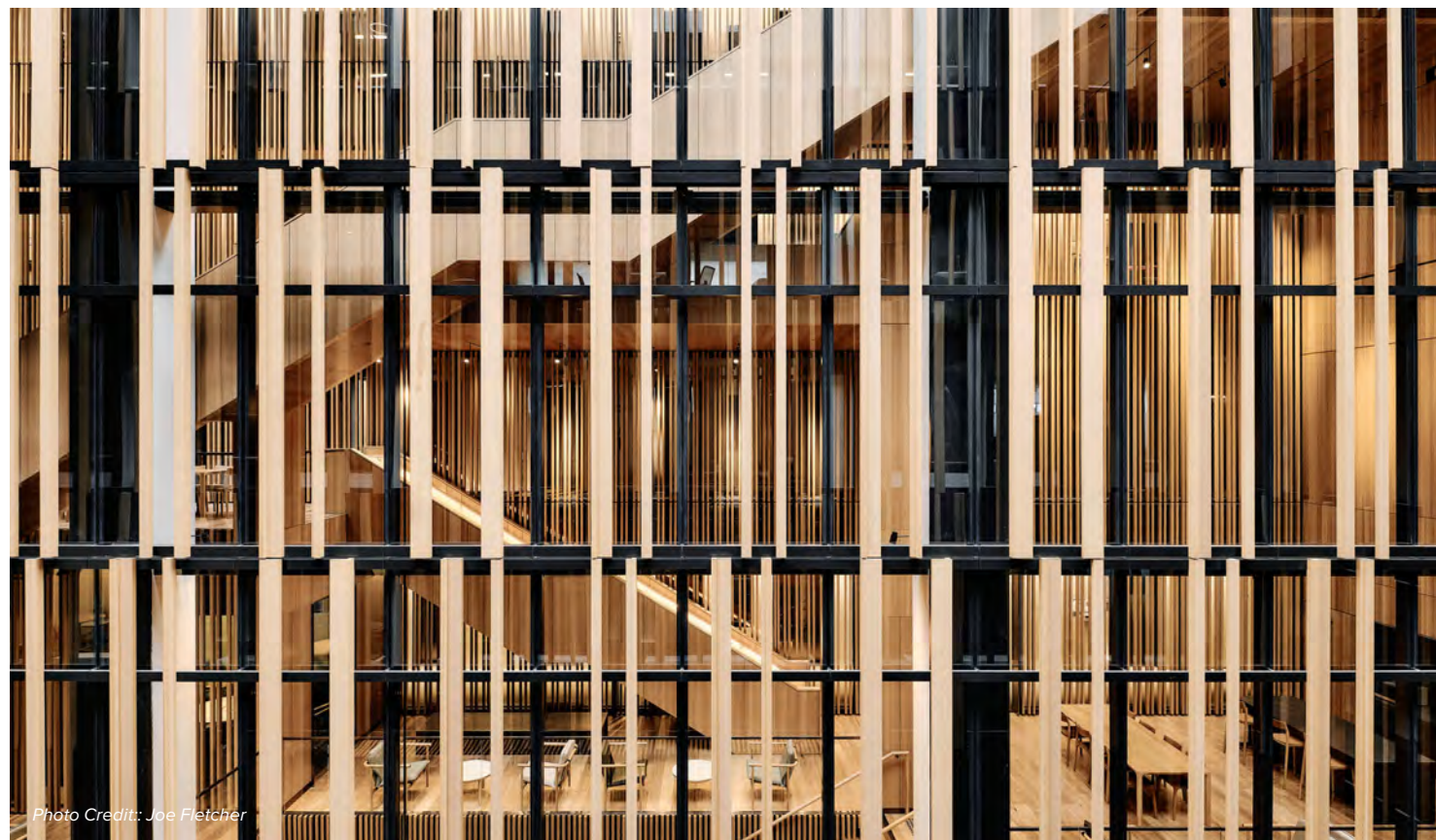


Photo Credit: Joe Fletcher

