

ENTRANCE RENOVATION

Over the years, the original design was diluted through a series of alterations to address the evolving operational needs of the Chancery. The original cantilevered space below the office wing was infilled with additional office space, a secure public entrance vestibule was added to the west façade of the office wing, and the original operable windows were replaced.

The purpose of the renovation was to modernize the building's envelope and systems, replace building elements that reached the end of their useful life, and restore the original design by removing non-original features added in prior alterations.

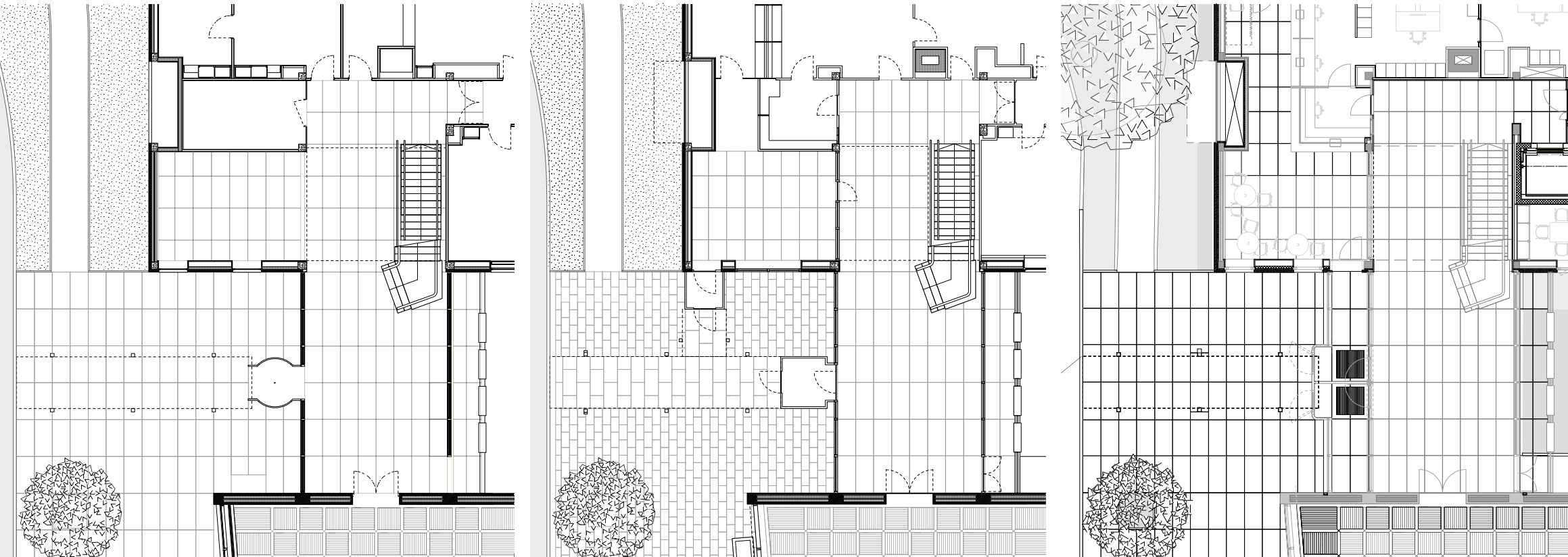
At the entrance, the confusing public vestibule addition was removed and replaced with a new welcoming visitor entrance.



Entrance from Cathedral Avenue



Entrance from Cathedral Avenue prior to Renovation



Original, 1959

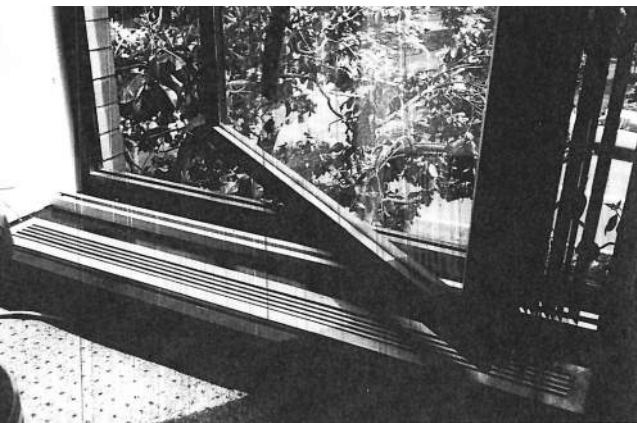
Existing: 2003 - 2007 Interventions

Renovated

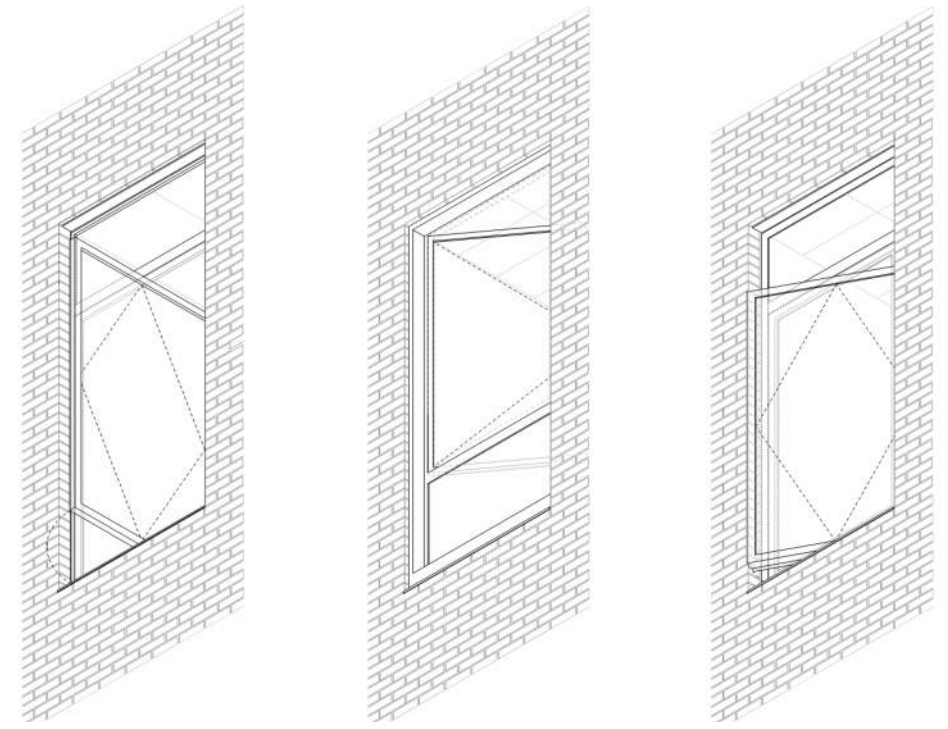
FACADE RENOVATION

The historic black and white photos failed to convey the brightness of the original window frames. The original windows were replaced in 1980s with windows with dark frame finish. The brightness of the original metal finish was revealed when the remaining original metal elements were cleaned of oxidation layers. The existing office windows were replaced with high performing operable windows that match the original configuration. The new window frame finish was selected to replicate the brightness of the original frame.

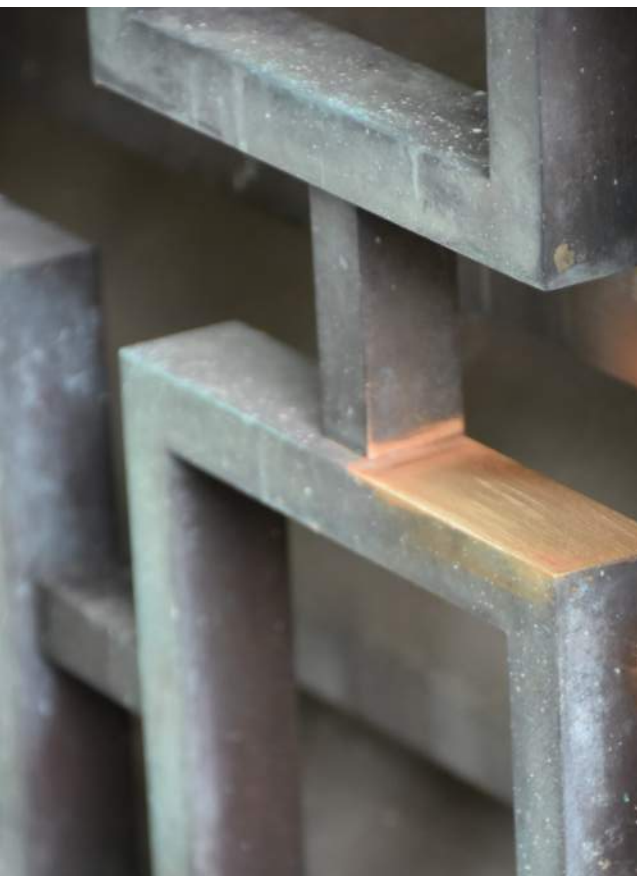
Due to the 2011 earthquake, the original brick façade experienced structural issues and had to be replaced. This presented an opportunity to introduce insulation into the building cavity, and so enhancing the thermal performance of the building envelope to meet current standards.



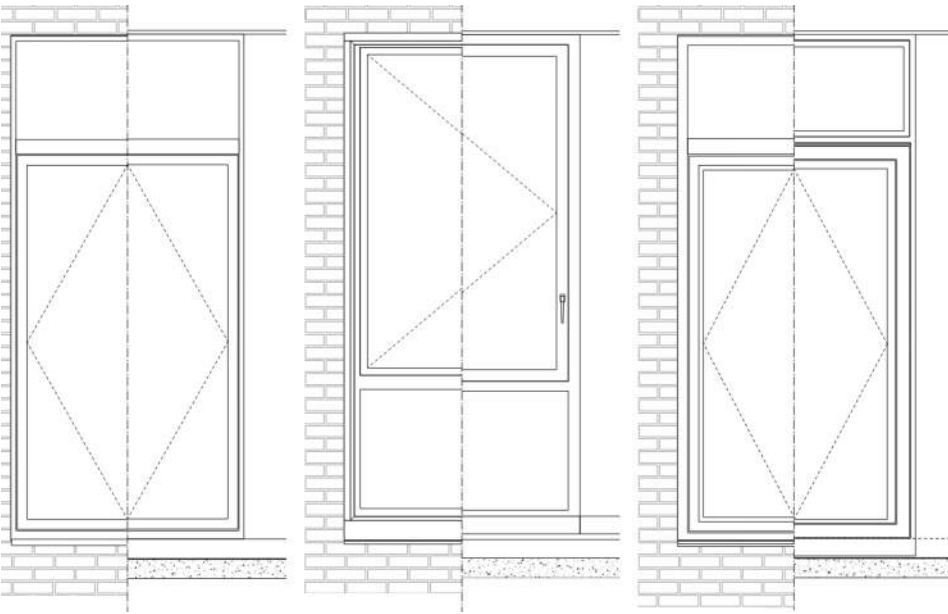
Original Window Design



Original Existing Renovated



Original Material: Bronze



Original Existing Renovated



Photography: Exterior

OFFICE WING TRANSFORMATION

The office space infill below the original cantilever of the office wing was removed and replaced with a smaller transparent addition of a staff cafeteria which opens onto a covered terrace, forming a setback in the façade configuration that resembles its original composition.



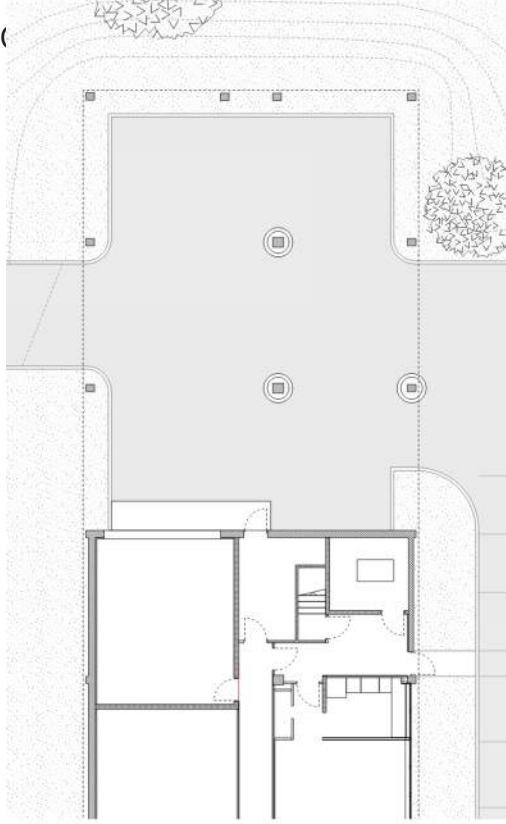
Office Wing, 1958



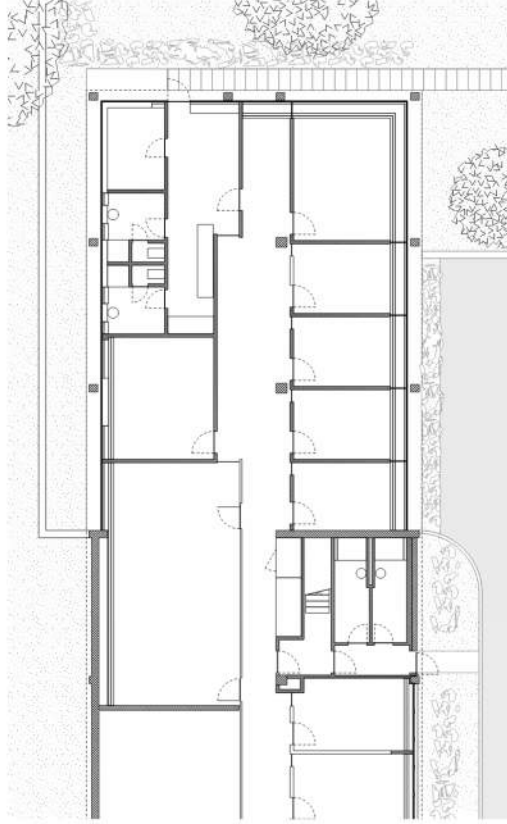
Office Wing, 1975 - 2004 Interventions



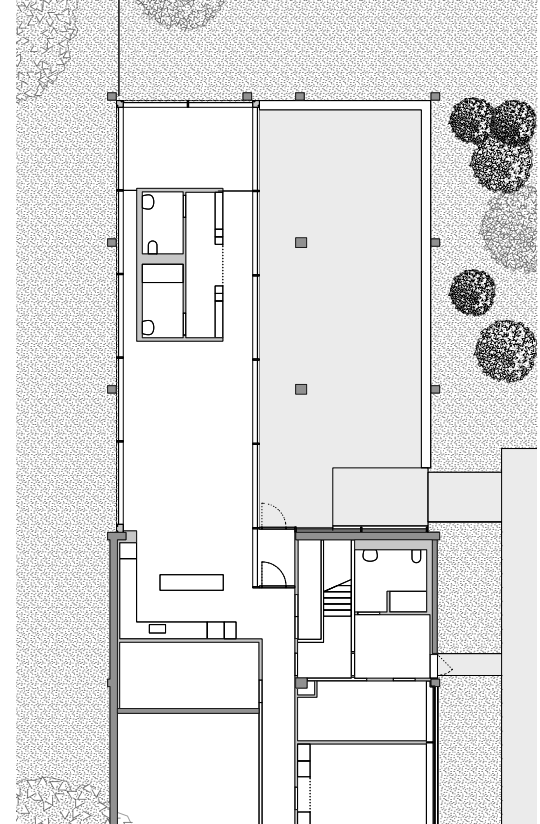
Photography: Office Wing Infill from 29th Street



Original, 1959

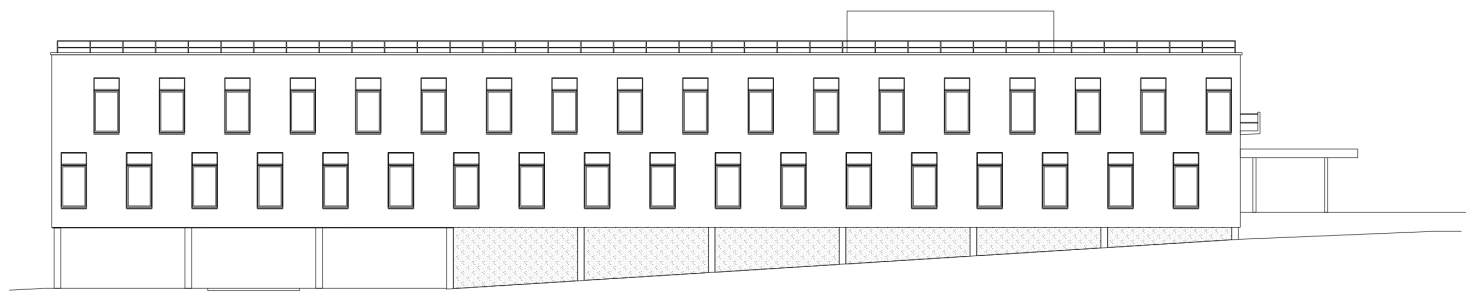


Existing: 1975-2004 Interventions

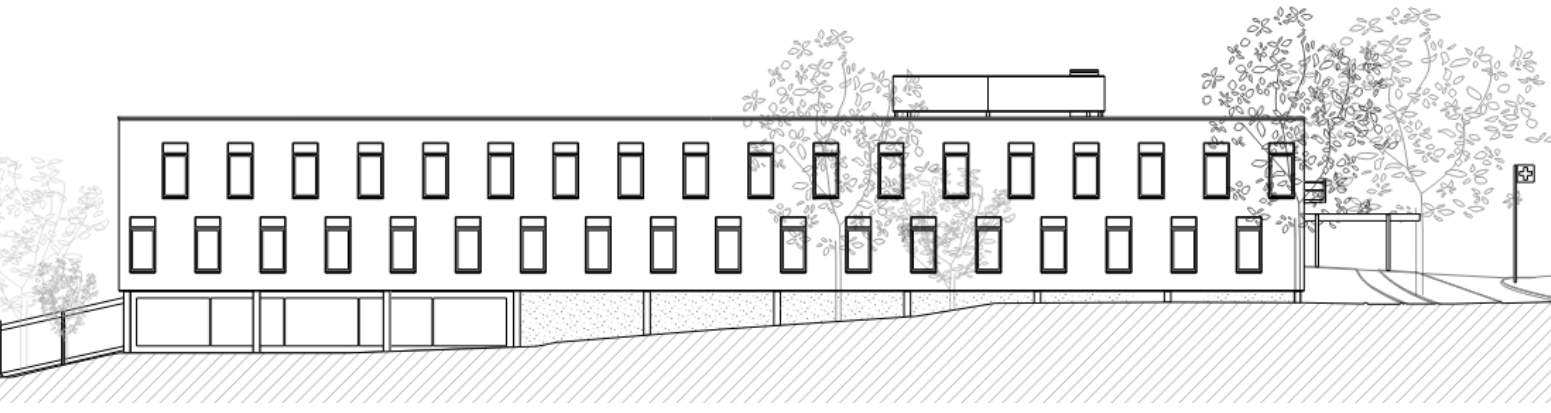


Renovation

ENVELOPE RENOVATION



East Elevation: Original



East Elevation: Renovated



Photography: Exterior Curtainwall



Photography: Exterior Curtainwall

INTERIOR RENOVATION



Photography: Reception Room



Photography: Entrance Hall