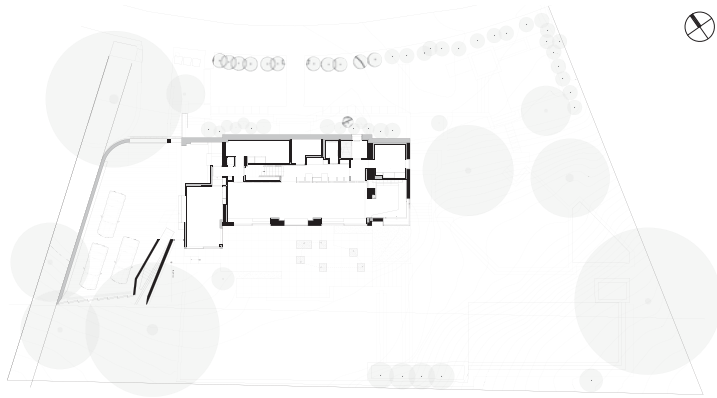




ROCK CREEK HOUSE



The Rock Creek House is an adaptive reuse project of a 1920's brick structure that was originally composed of two floors, as well as a mechanical basement at the garden level, and an attic that offered storage space. This renovation and re-adaption leveraged the connection with the landscape and the robustness of the existing structure to modify the attic and basement to double the size of the house, while offering room for an expanding family of 5, with an added 2-3 staff members.

Urban on on the north face at street level, the property gives way to a dramatic drop on the southern side in relation to Rock Creek, and the extended natural preserve that is its legacy. The house builds up on the formality of the front -its requisite symmetries, order and tone—while giving way for a more open informality on the south taking advantage of the relationship to sun and greenery.

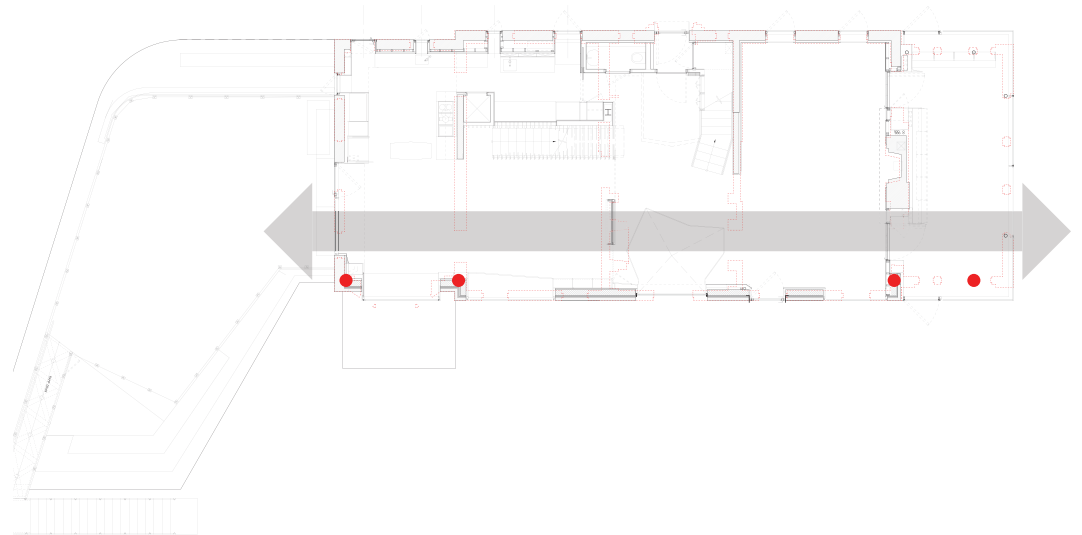
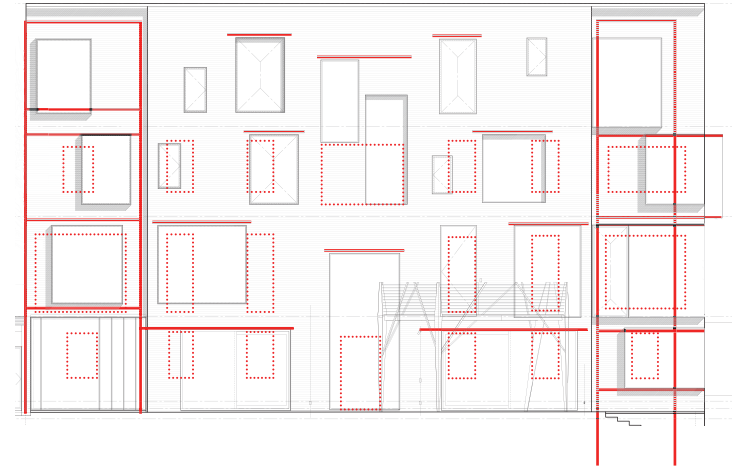


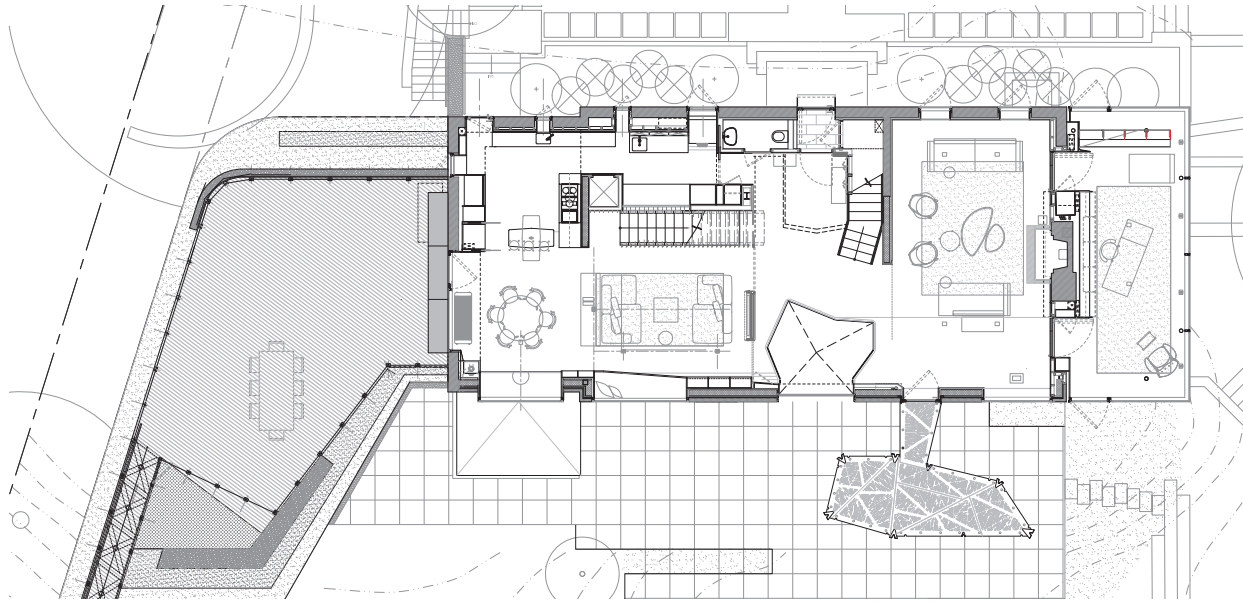
While the north façade on the street remains relatively intact, the idea of the house was also to develop a more generous exposure to Rock Creek and the southern exposure, where they extend the house into the garden areas. By expanding the areas of glazing on the south, and establishing a more precise relationship between rooms and their respective apertures, a new architectural order is established - more informal, open and in dialogue with nature.



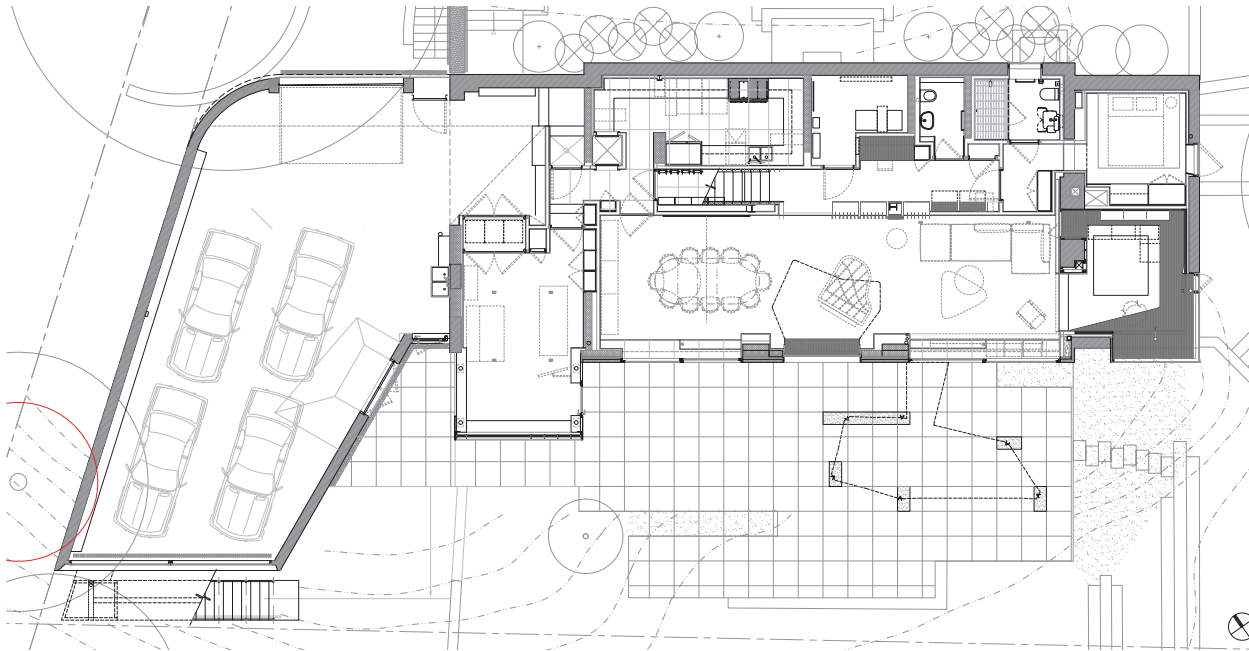


At the same time, this very simple strategy imposed maybe one of the most radical impacts on the structure of the building. By expanding the square footage of glass on the southern face, effectively the load bearing function of the brick wall was proportionally altered to become a curtain wall, with steel structure providing both compressive and lateral stability for this new face. Economical in its spatial organization, the project leverages the existing composition of the house to maximize its architectural and programmatic impact without the need for demolition or an entire new construction.





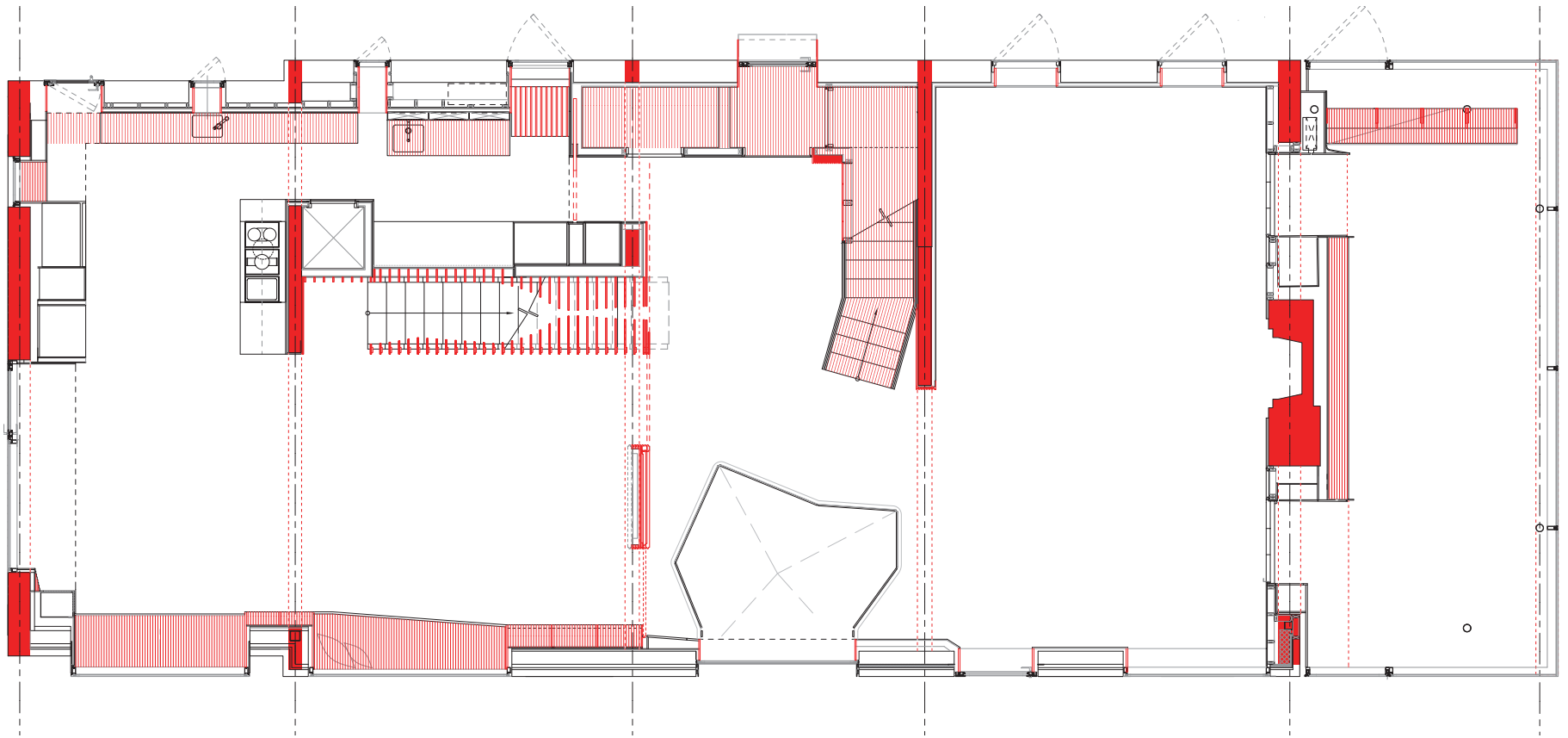
ground level



garden level



The perimeter wall structural system is reorganized around a north-south bias. In correspondence to this internal wood framing bridges across the north-south axis connecting the partywall system, and in tandem the millwork is framed between structural piers such that the vertical striation of the plywood reinforces the directionality of the house. From a solid facade on the North to a transparent and glazed facade to the south, the tectonics of the house reinforces this transformation.





looking up main stair



window at stair



main stair at level 2

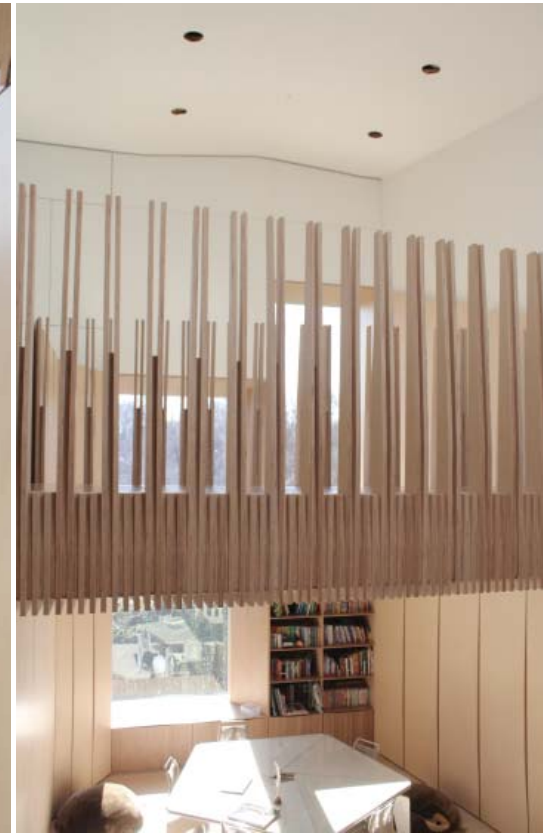
The most salient spatial intervention was the introduction of a new stair at the center of the house as well as two multi-height spaces. The first is a double height space at the entry, connecting the entry level to the garden level, with a new living room that extends the interior spaces to the southern exposure. The second space connects the entry on the northern side to the former attic, now a research and play loft for the kids capped by a skylight. With these two interventions the once stratified realms of storage, bedrooms, work areas and living areas become interconnected and seamlessly intertwined.



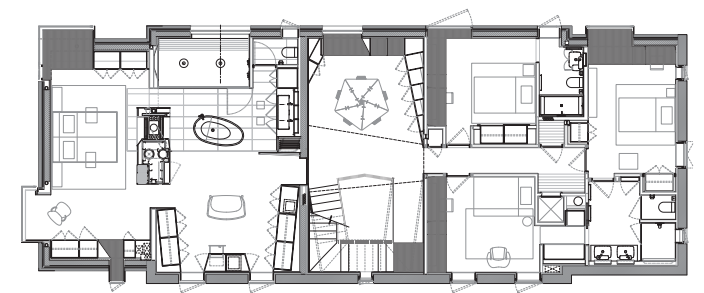
section through main stair



stair details



The second floor offers a large collective homework room, where the family comes together for mentoring, tutoring and daily intellectual chores.



second level



custom 5-legged table designed for homework area





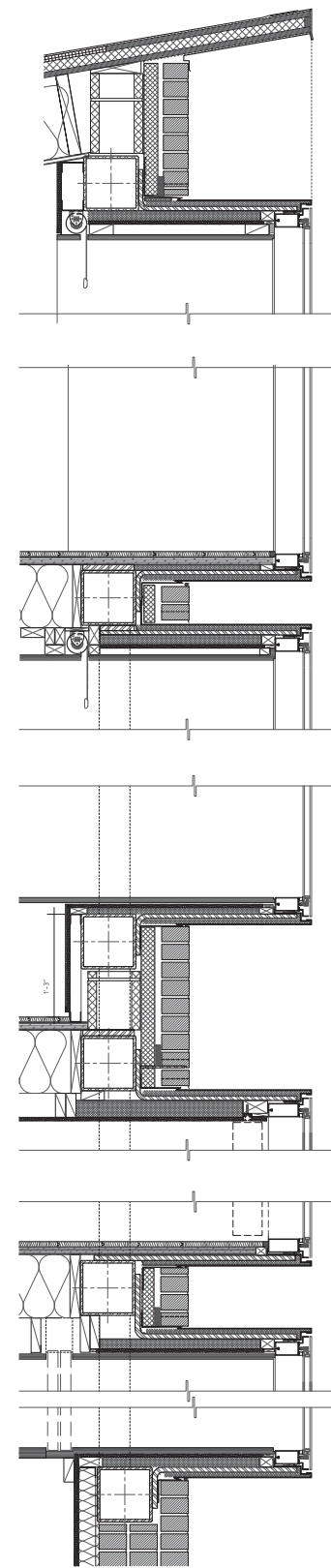
second level hallway



cabinet detail



south-east
corner



The house is conceived as a work space for an expanded family. From the first to the fourth floor, scales of study, collaboration, and work are arranged in relation to a family with a complex array of schedules, requirements, and technical needs. Three of these spaces are stacked at the South-East corner. At the ground level, the main office serves as a home office, drawing in many business guests, small conferences and an area of acoustic isolation.



office on ground level



door knob
to office



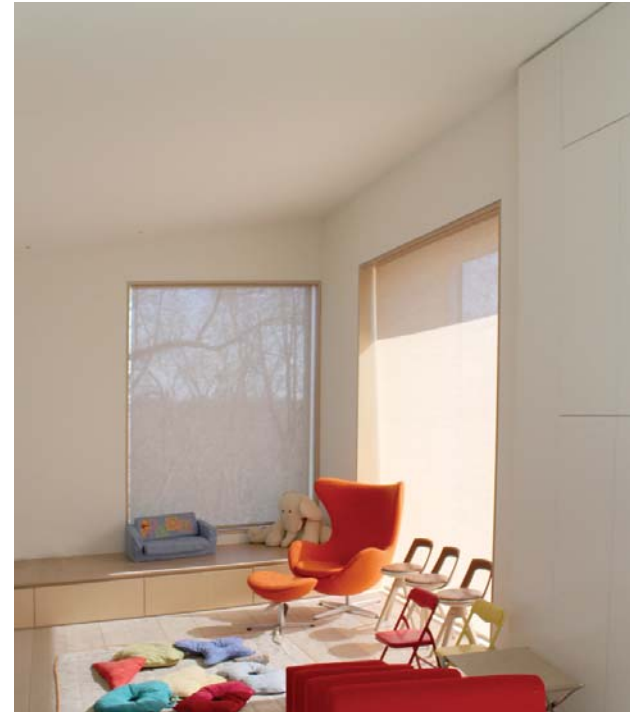
At the garden level, an office space connects to the outdoors, the space of film editing, archiving and computing.

At the second level the work space is located at the central stair; making way for the master bedroom to take advantage of the corner views.



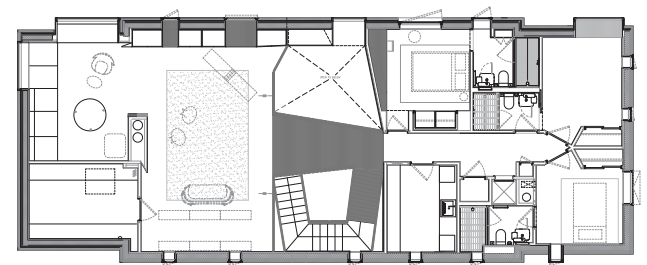


giraffe millwork detail



playroom

The upper most level offers an open flexible space targeting the opportunity for research, making, and experimental play. A large media screen is also situated in an alcove, toggling between instruction and entertainment.



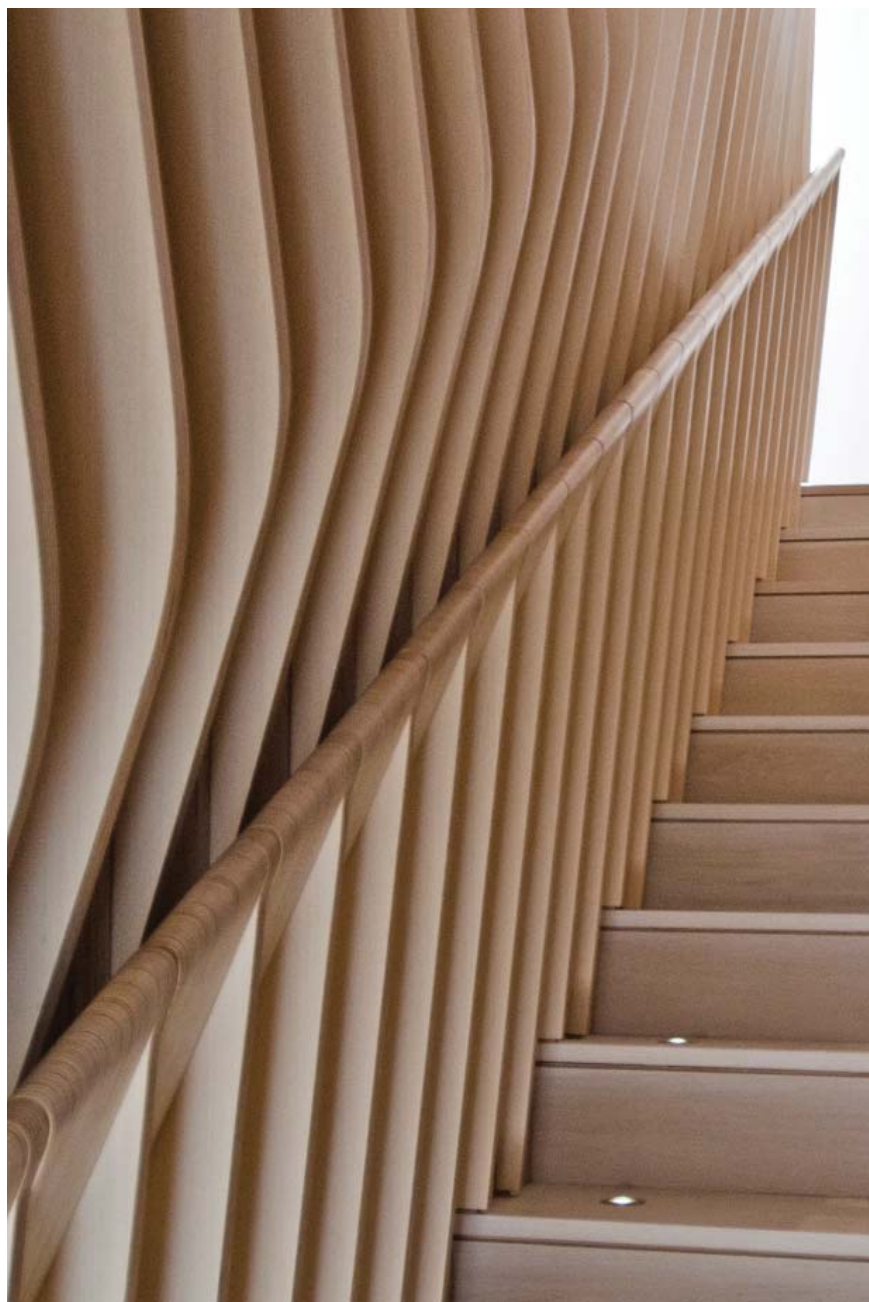
third level



stair detail



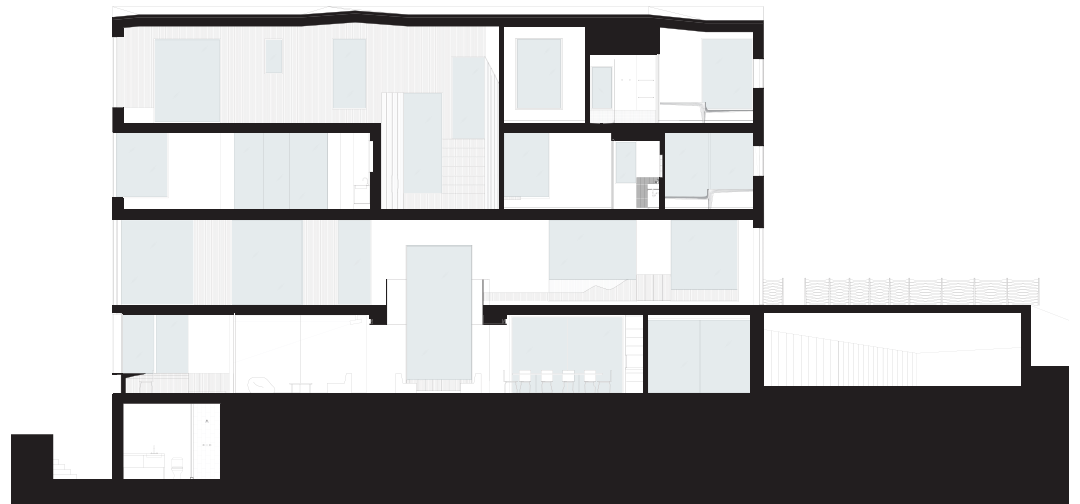
secondary stair



railing detail



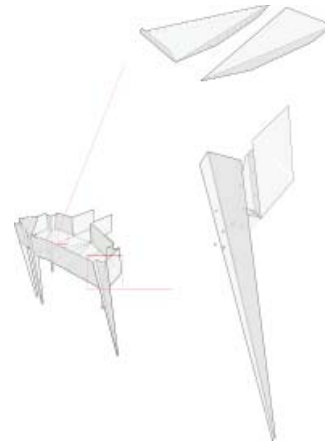
ground level
living area



section through main living spaces



view in from
southern patio



canopy





canopy under
construction



canopy detail

