

Mi Casita

Carmen grew up and lived her formative years in Puerto Rico. As a young woman she moved to the United States to pursue a career. After more than 30 years of traveling and living away from Puerto Rico, Carmen decided she wanted her DC row house to be reminiscent of her island home.

The architects responded with three key elements: Color, Light, and Materiality.

COLOR: Colors used are traditional to Puerto Rico, and the composition acts as a 3-dimensional collage within the house. The east wall is lined with large sculptural storage elements painted orange and yellow. Other elements are neutral black to contrast the rich colors. The west wall is lined with colorful artwork from Carmen's collection of local and island artists.

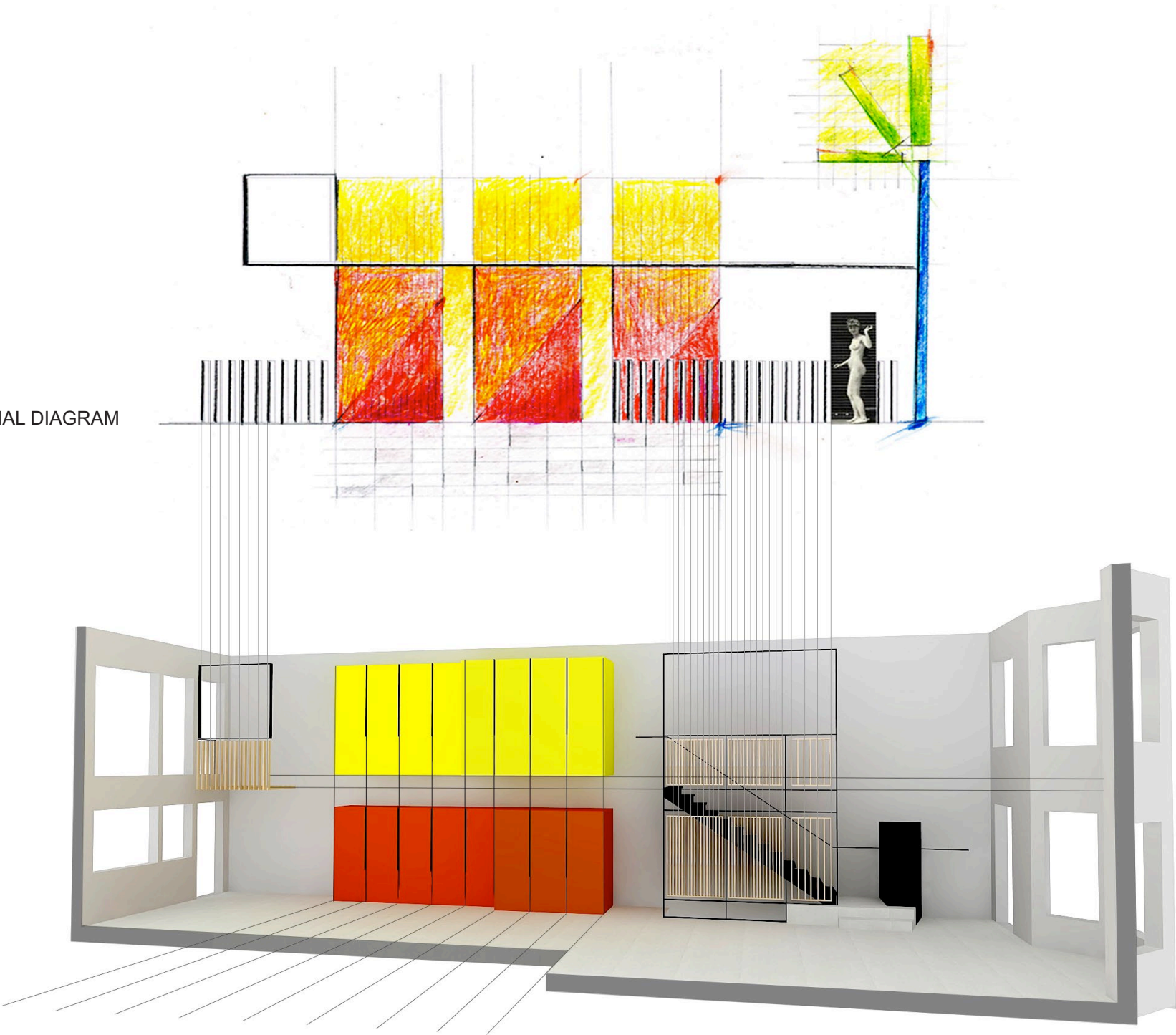
LIGHT: Most of the interior walls were removed and large windows placed on both levels of the rear facade, accentuating a double height space. A center skylight was enlarged and the stairs designed w/ open risers. Casement windows replaced all the original double hung windows, and light colors highlight surrounding ceilings and walls.

MATERIALITY: The living space flooring is white porcelain tile, while the second floor is a dark bamboo. The wood "mampara" screen at the stairs is a white-washed poplar, and is framed with blackened steel. The poplar reappears on the second level and at the rear "bridge," terminating at the Juliette balcony. Pendant lights are fabricated with bamboo and coated papers.

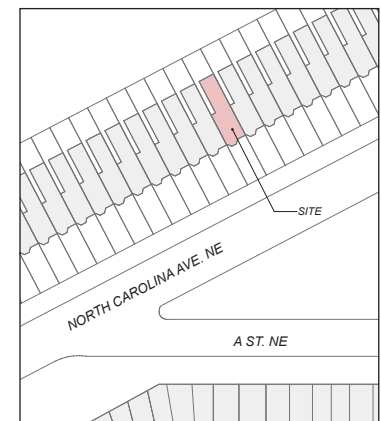
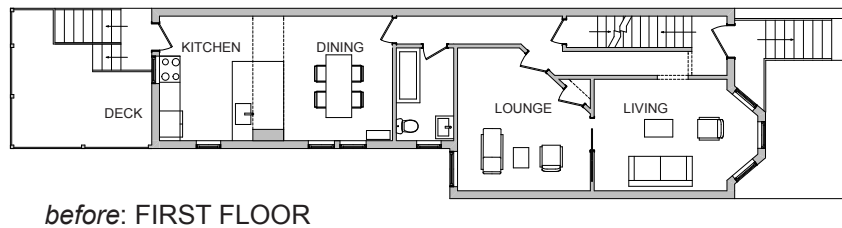
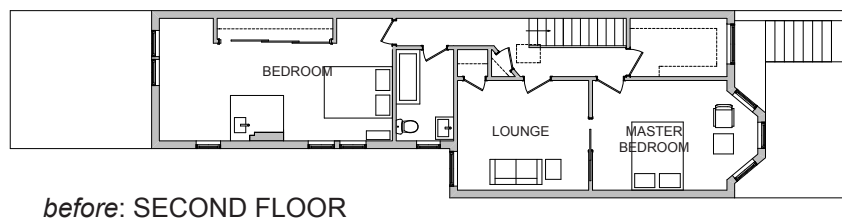
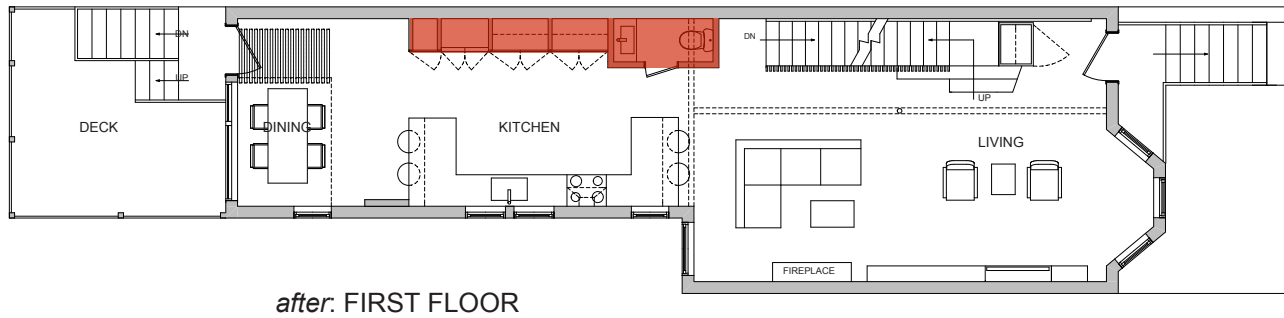
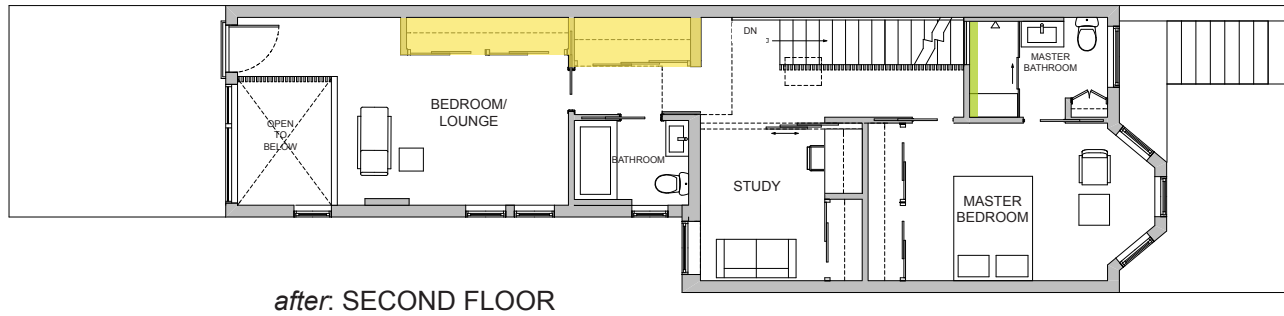




INSPIRATIONAL DIAGRAM





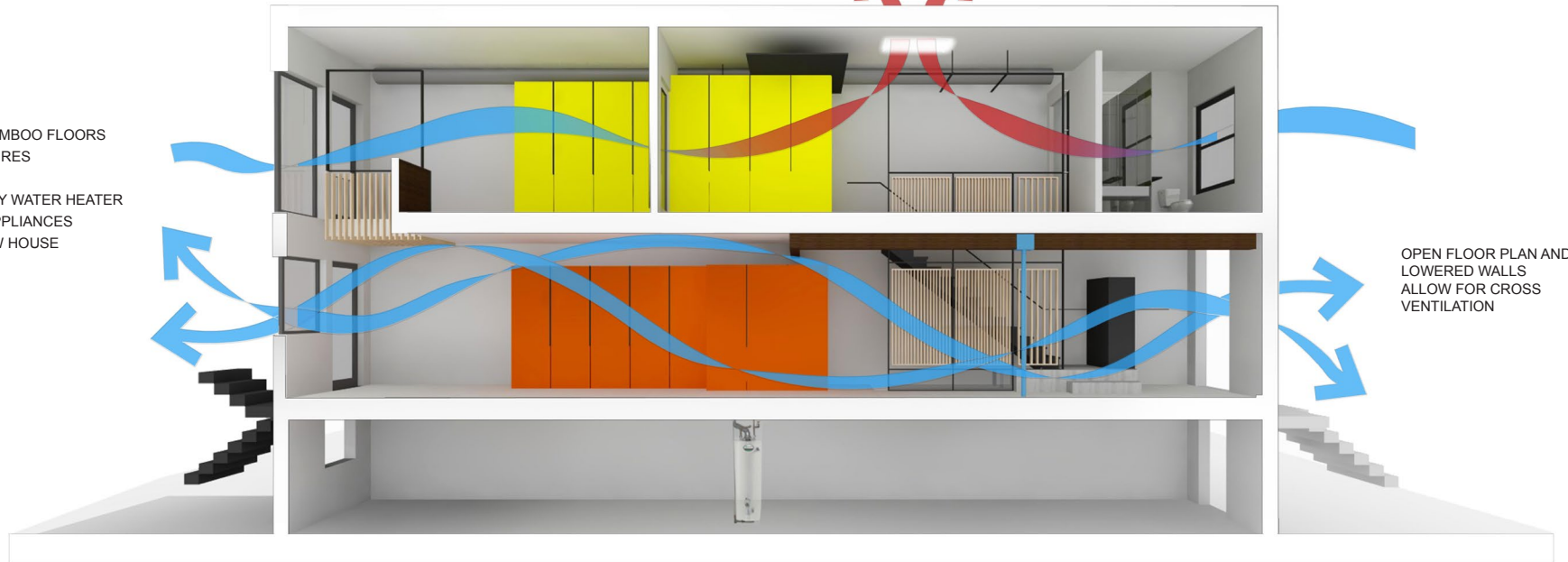


SITE PLAN

WARM AIR ESCAPES THROUGH SKYLIGHT
DURING SUMMER MONTHS



- 1 NO VOC PAINT
- 2 PORCELAIN TILE
- 3 LED LIGHTS
- 4 SKYLIGHT
- 5 SUSTAINABLE BAMBOO FLOORS
- 6 LOW FLOW FIXTURES
- 7 EXPOSED STEEL
- 8 QUICK RECOVERY WATER HEATER
- 9 ENERGY STAR APPLIANCES
- 10 RENOVATED ROW HOUSE



OPEN FLOOR PLAN AND
LOWERED WALLS
ALLOW FOR CROSS
VENTILATION

SUSTAINABILITY DIAGRAM





before



before

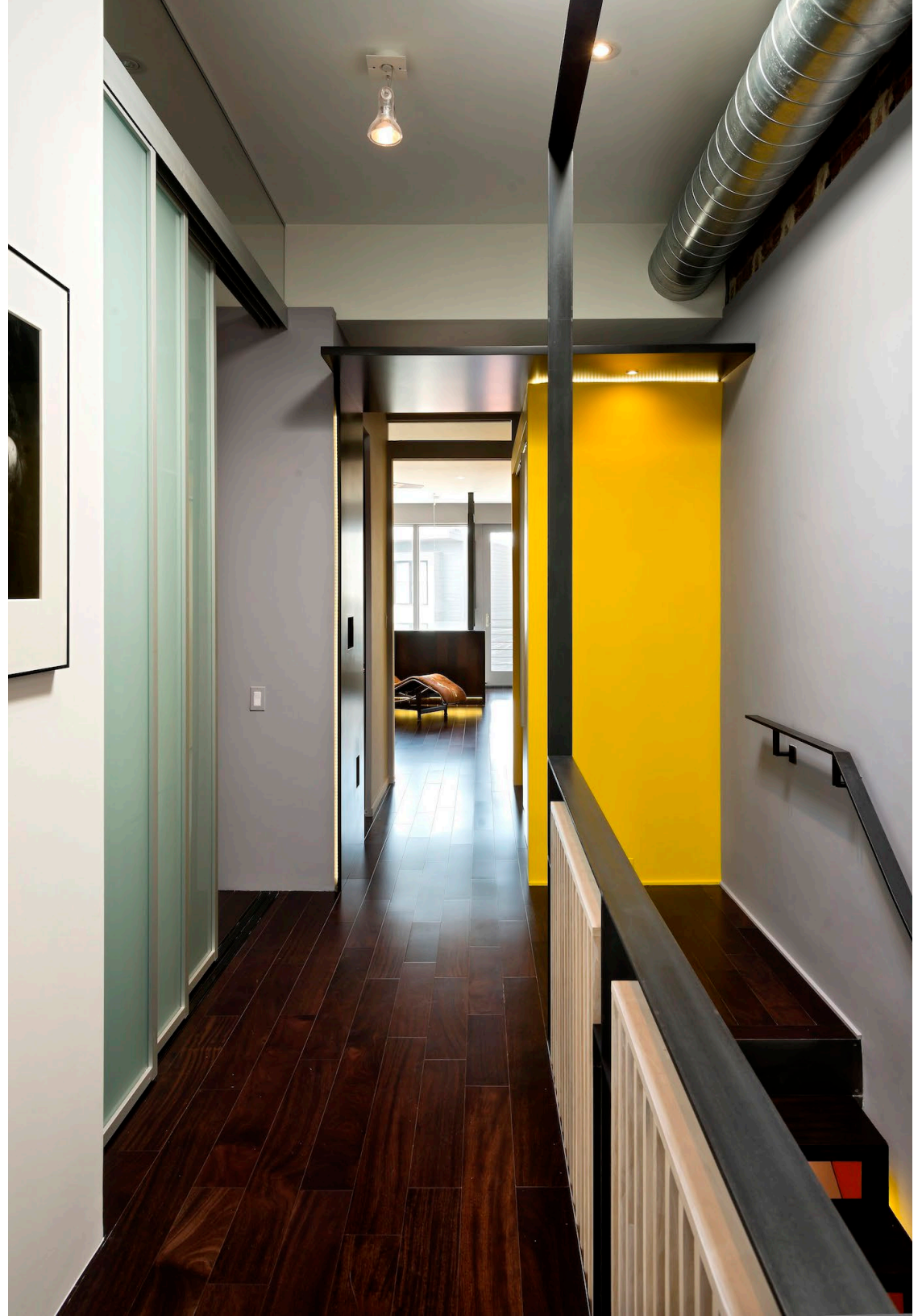


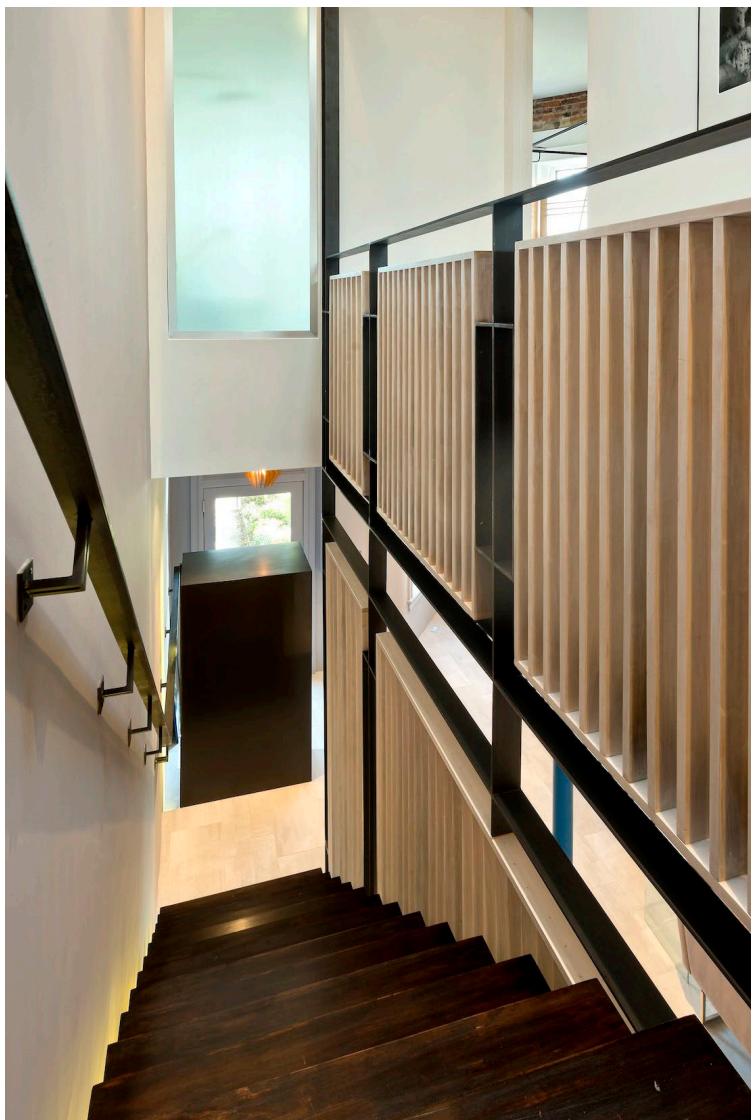
before





before







before

