



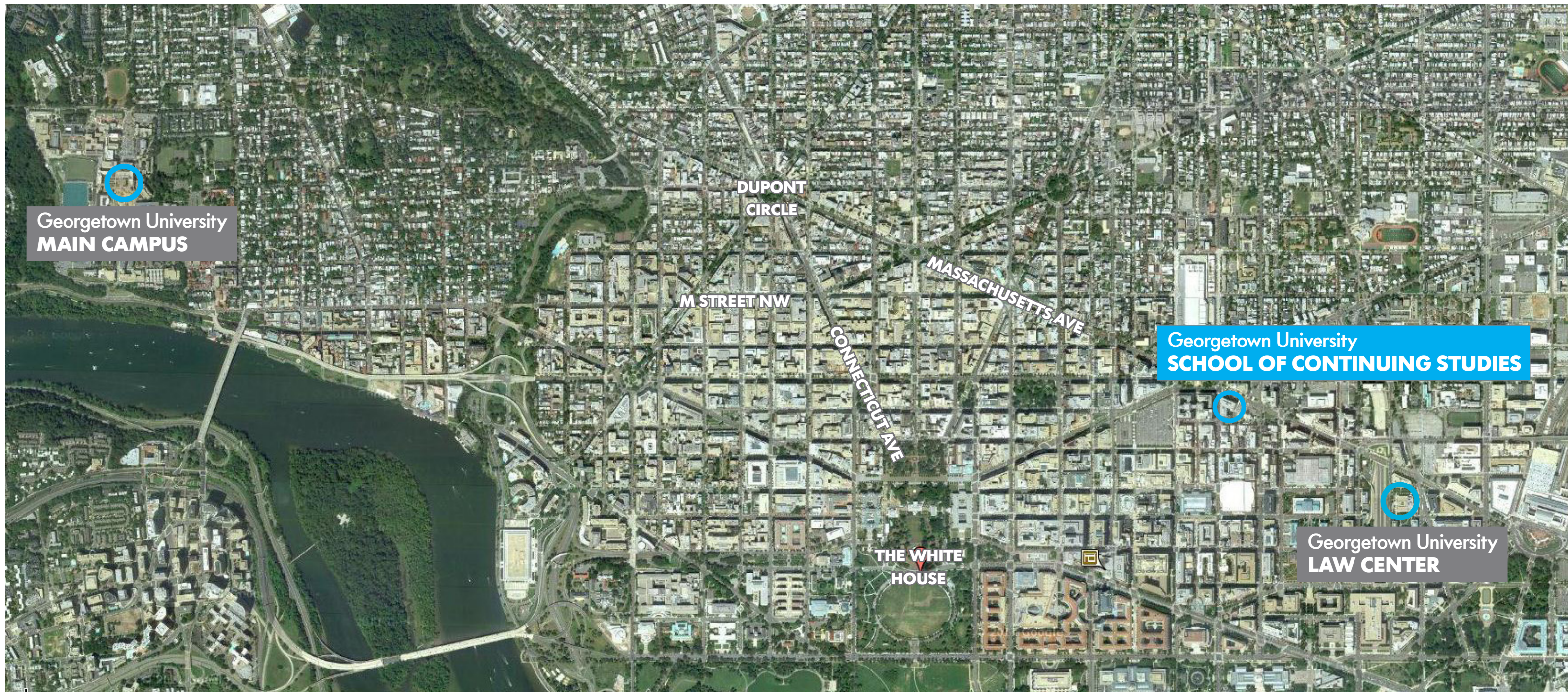
GEORGETOWN UNIVERSITY SCHOOL OF CONTINUING STUDIES

AIA|DC CHAPTER DESIGN AWARDS 2015
INTERIOR ARCHITECTURE

GEORGETOWN UNIVERSITY SCHOOL OF CONTINUING STUDIES

A NEW IDENTITY IN DOWNTOWN DC

Georgetown University's rapidly growing School of Continuing Studies elected to consolidate their off-campus programs into a single location in downtown Washington, DC. The Architect guided Georgetown through an extensive site search which resulted in the decision to take space in a commercial office building that formerly housed a television studio. Although the existing space initially appeared unusable, the location was ideal as it greatly enhanced opportunities for staff, students and professors to engage with the downtown business community.



PRESENCE

CONNECTION TO THE NEIGHBORHOOD

The Architect replaced the windowless facade with a two-story glass curtainwall volume that gives Georgetown an instant presence in the neighborhood and visually links the atrium to the street. The north-facing facade allowed the Architect to utilize a virtually “tint-free” laminated glass enclosure that brings daylight deep into the space during the day and creates a beacon at night.

BOLD INTERVENTION

ADAPTIVE TRANSFORMATION

The building's unusual volumes allowed the Architect to transform the space by interjecting a four-story atrium with a central communicating stair that serves as a visual and circulation link to all major program elements, classrooms and offices.

AUDITORIUM

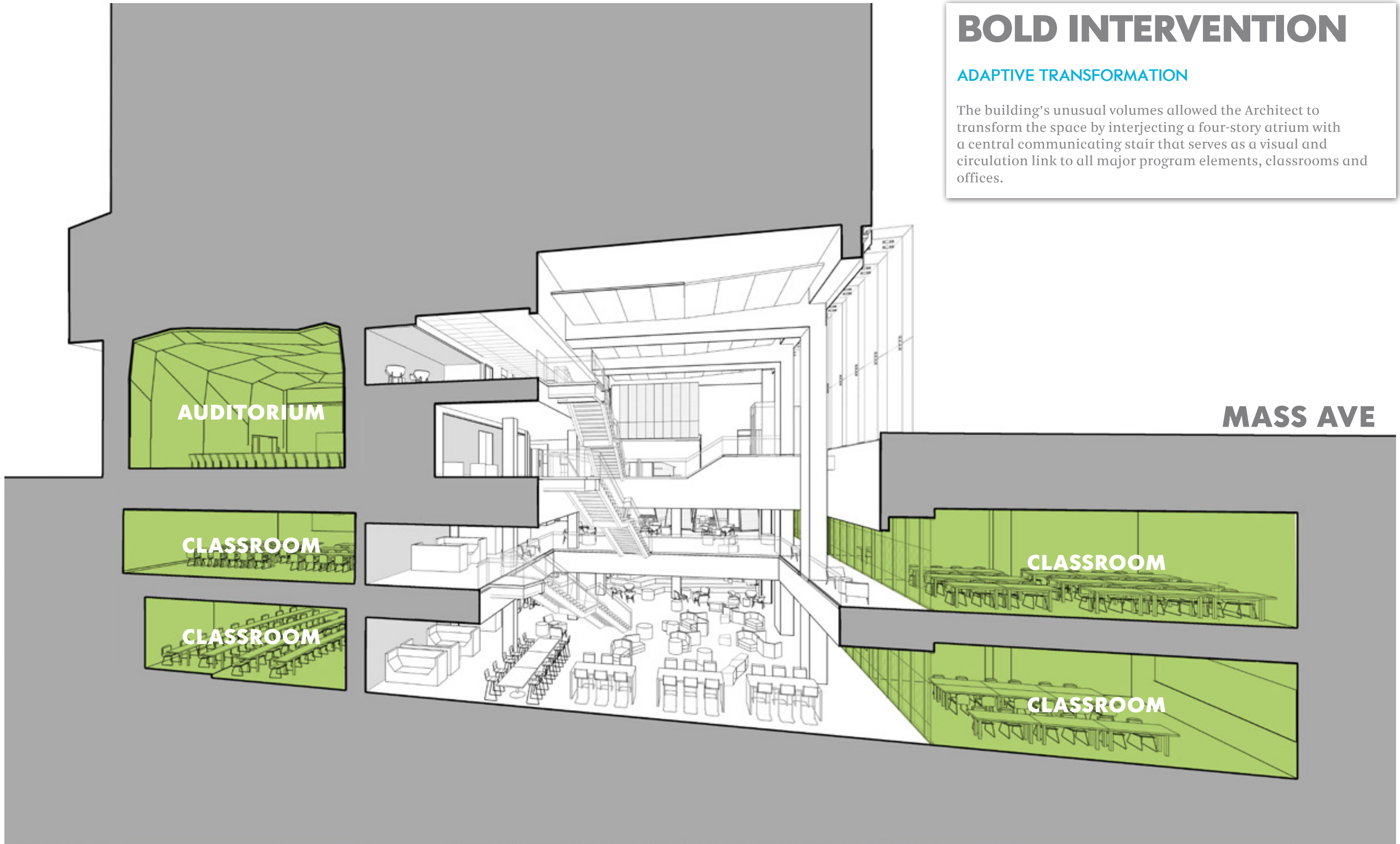
CLASSROOM

CLASSROOM

CLASSROOM

CLASSROOM

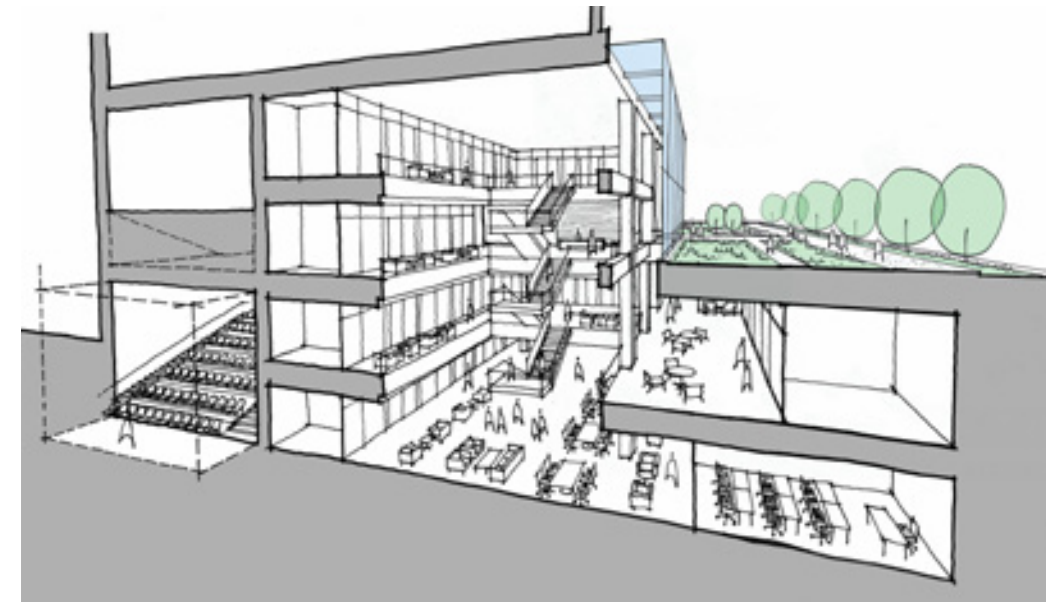
MASS AVE



BUILDING WITHIN A BUILDING

REALIZING POTENTIAL

An extensive site search throughout DC yielded few exceptional opportunities as DC's shallow floor-to-floor heights provided less than ideal spaces for large classrooms. Although windowless and primarily below grade, the vacant space at 650 Massachusetts Avenue provided unusually large columnless volumes that could accommodate a bold, transformative intervention.



ATRIUM AFTER

INTERIOR BEFORE



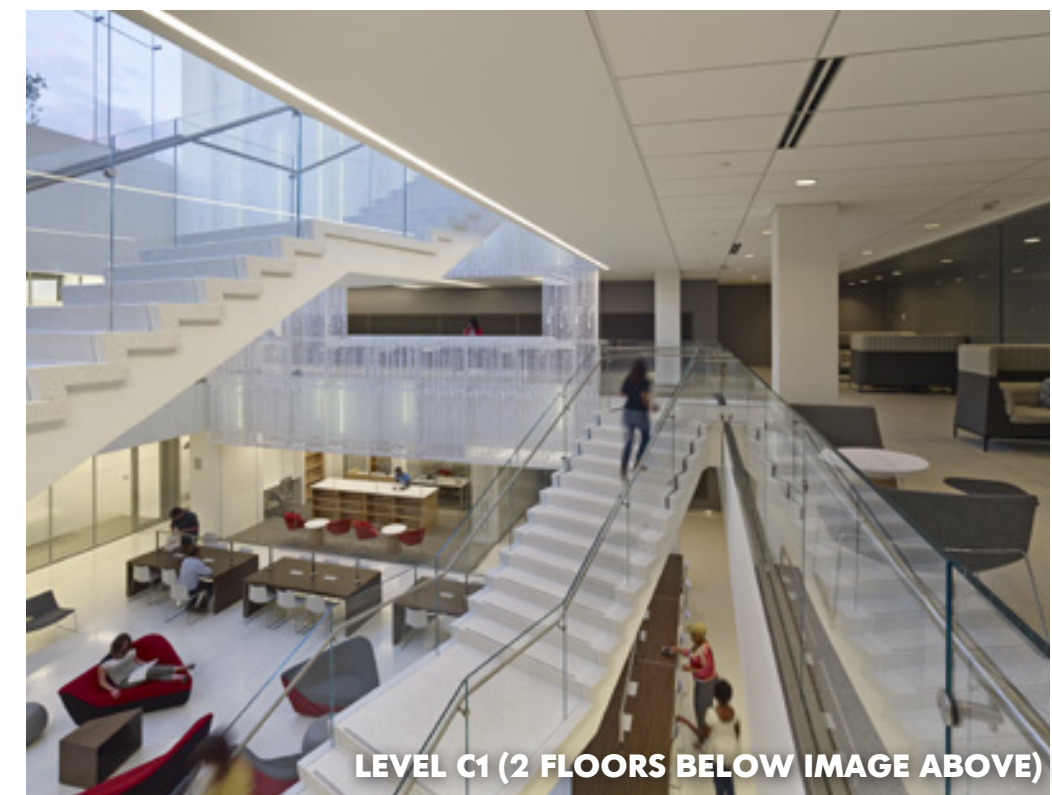
TRANSPARENCY

VISUAL CONNECTIONS - INTERNAL AND EXTERNAL

The extensive use of glass not only permits daylight to penetrate deep into the space, but also visually connects and exposes, both internally and externally, the many dynamic facets that make up the School of Continuing Studies.



LEVEL 2



LEVEL C1 (2 FLOORS BELOW IMAGE ABOVE)



VIEW FROM EXTERIOR AT NIGHT



VIEW FROM CLASSROOM



VIEW INTO CLASSROOM



STUDENT STUDY



STUDENT COMMONS VIEW TO ATRIUM + CLASSROOMS

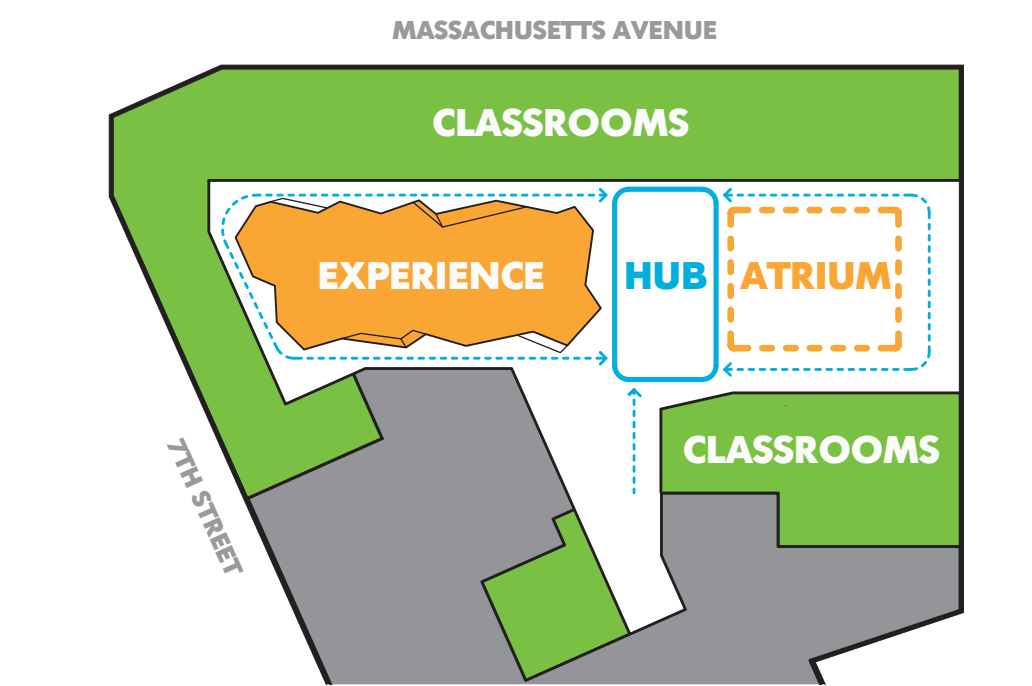


STUDENT TERRACE

SPATIAL EXPERIENCE

VARIETY SHOW

With the lack of views to the outside, one of the primary goals was to create visual interest in every part of the space. The program includes a variety of classrooms, study spaces, and offices as well as specialized spaces such as a broadcast studio, alumni center, faculty lounge and cafe. The Architect also designed the conversion of a large studio into a 140-seat tiered auditorium that can be used as a large classroom, lecture hall, or meeting space.



STUDENT COMMONS



BUSINESS CENTER



STAFF CAFE



SMALL CONFERENCE ROOM + CLASSROOM

