

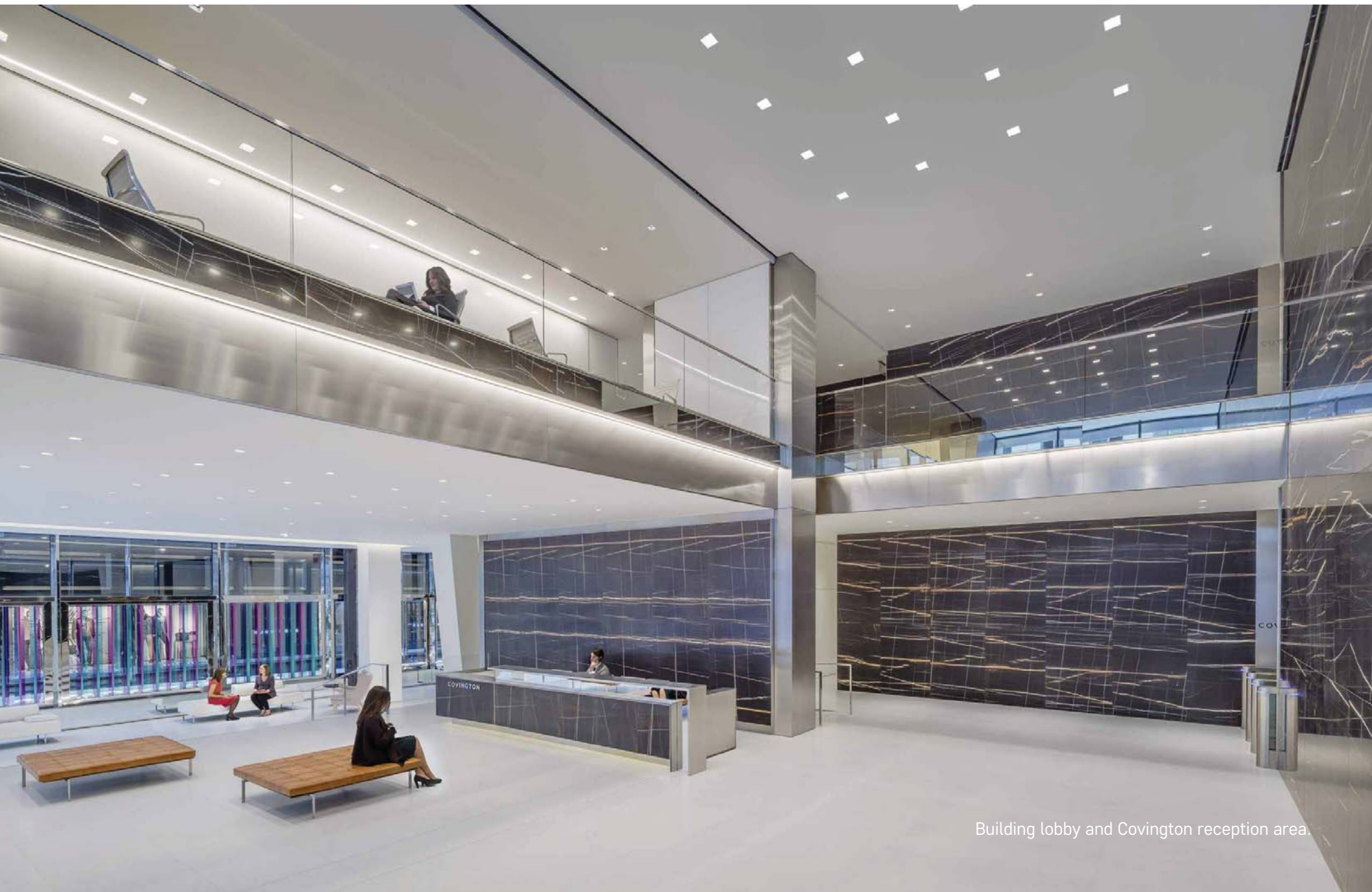


COVINGTON & BURLING

CITYCENTER, WASHINGTON, DC



One CityCenter entry—front door for Covington .



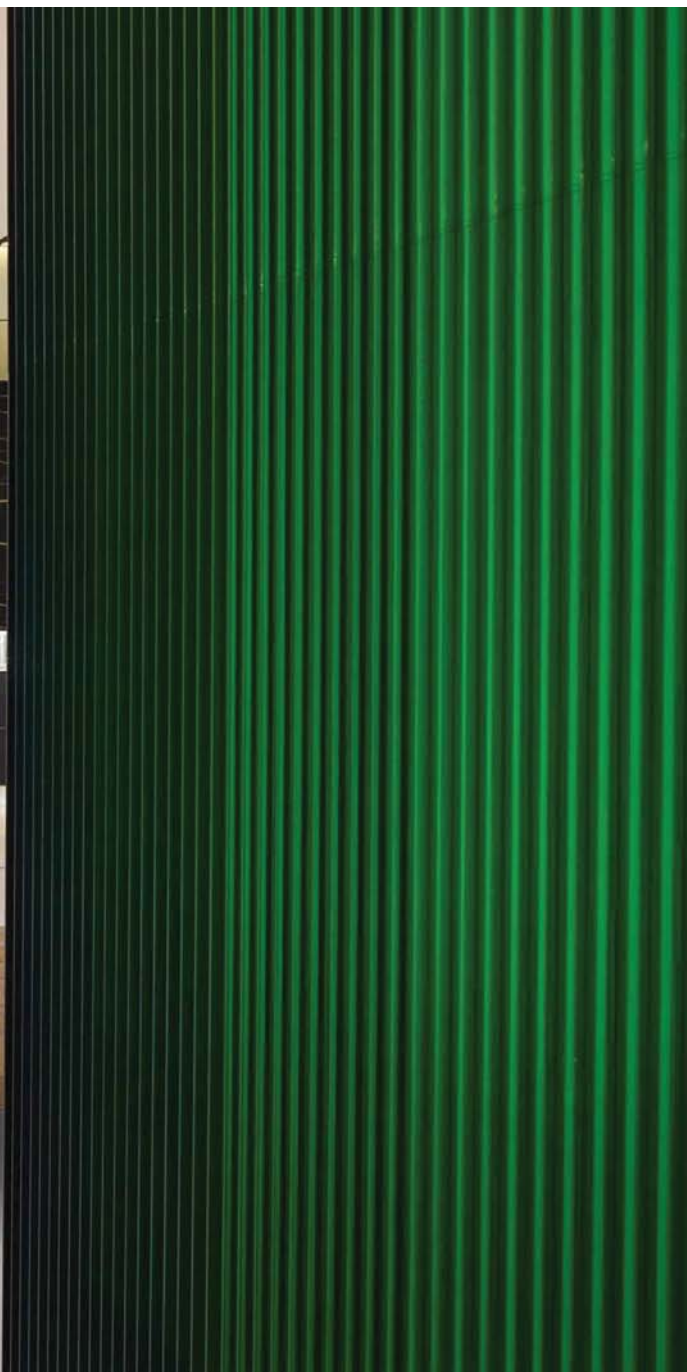
Building lobby and Covington reception area.



Semi-public ground level gallery space
with Carlos Cruz Diez art installation



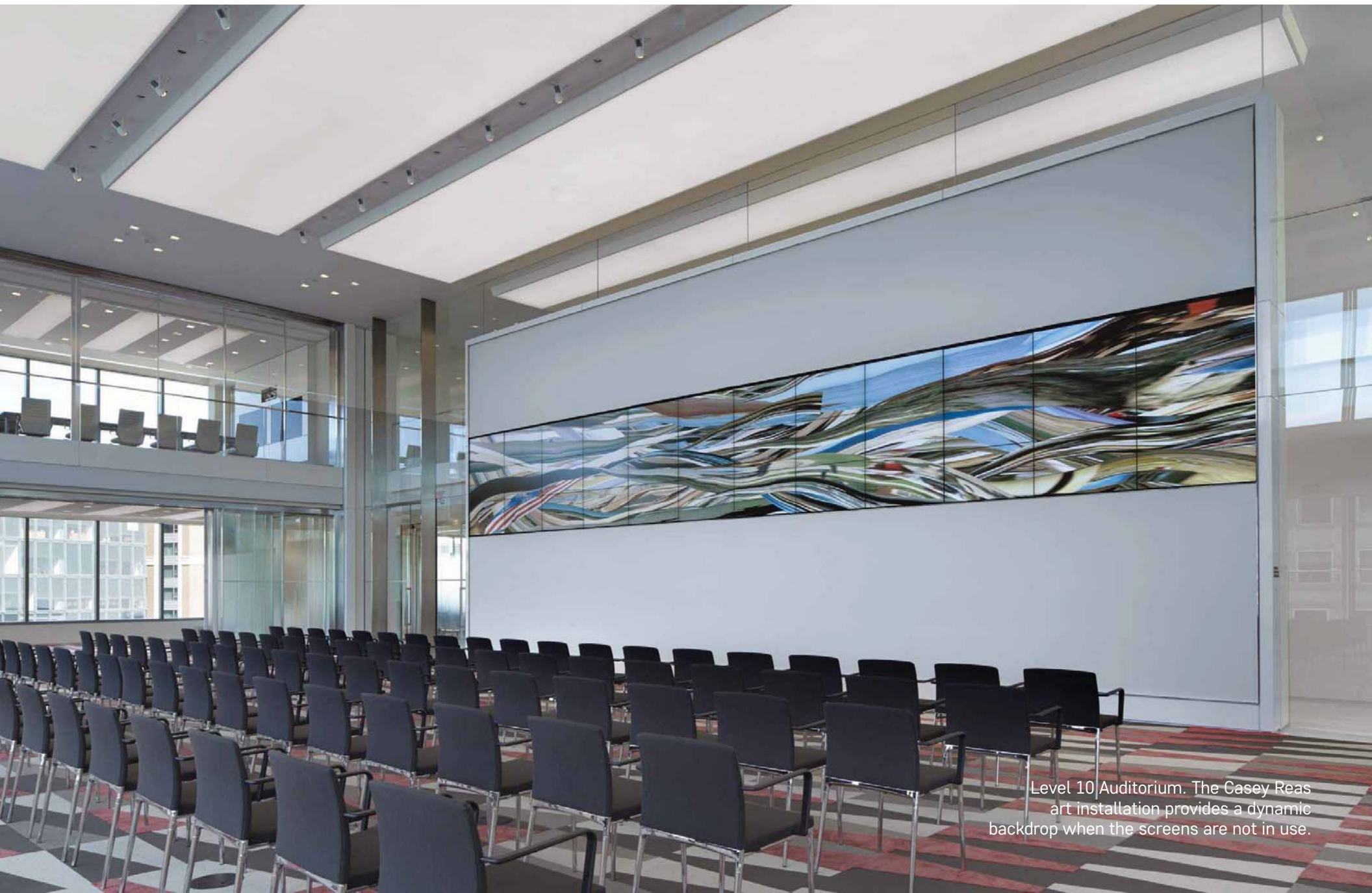
Carlos Cruz Diez's kinetic art installations *Transchromie* and *Physichromie* create an ever-changing condition of light.



View from Level 01 multipurpose room.
Transparency and layering of glass create a strong
visual connection to the retail arcade and beyond.



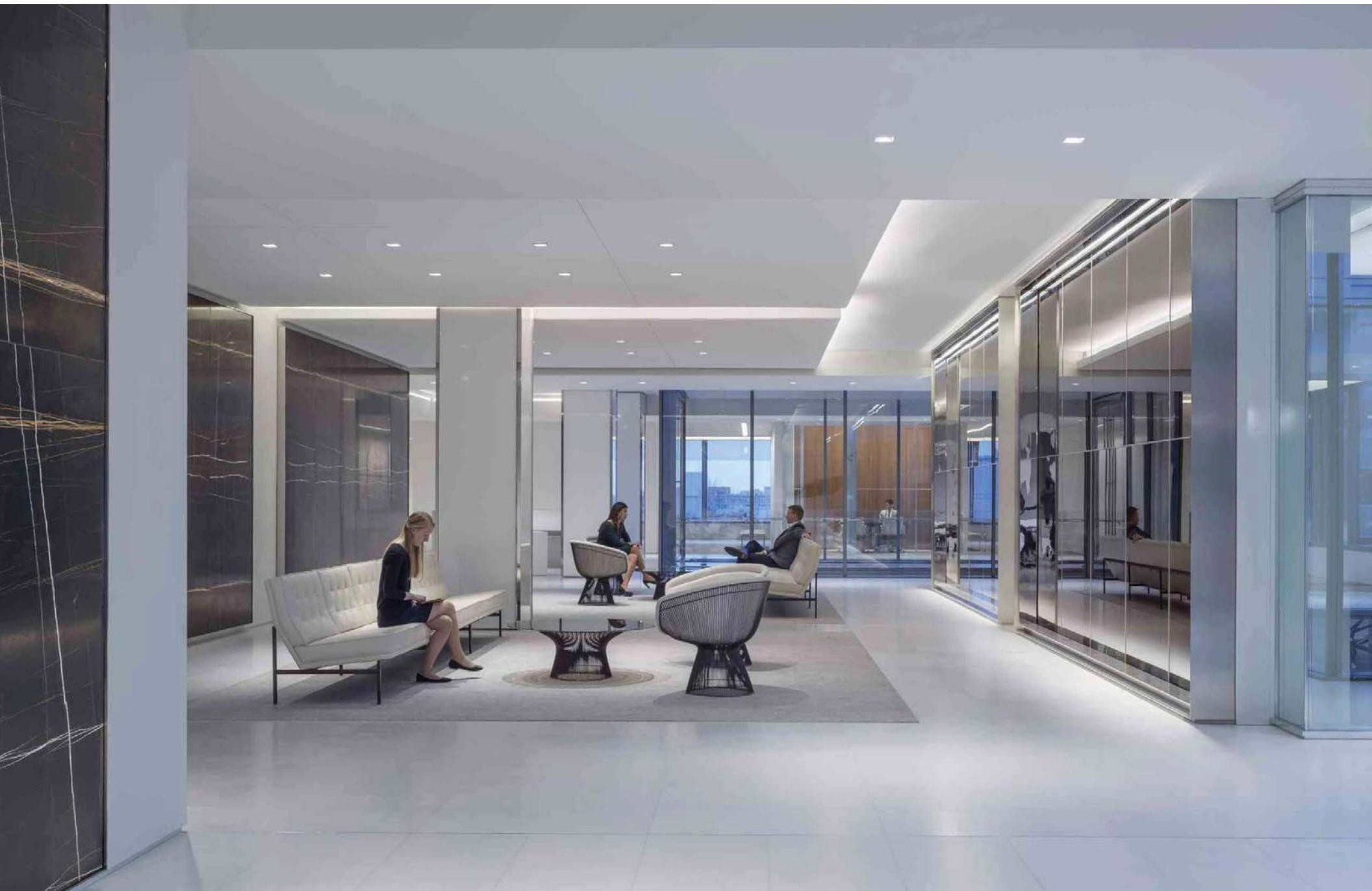




Level 10 Auditorium. The Casey Reas art installation provides a dynamic backdrop when the screens are not in use.

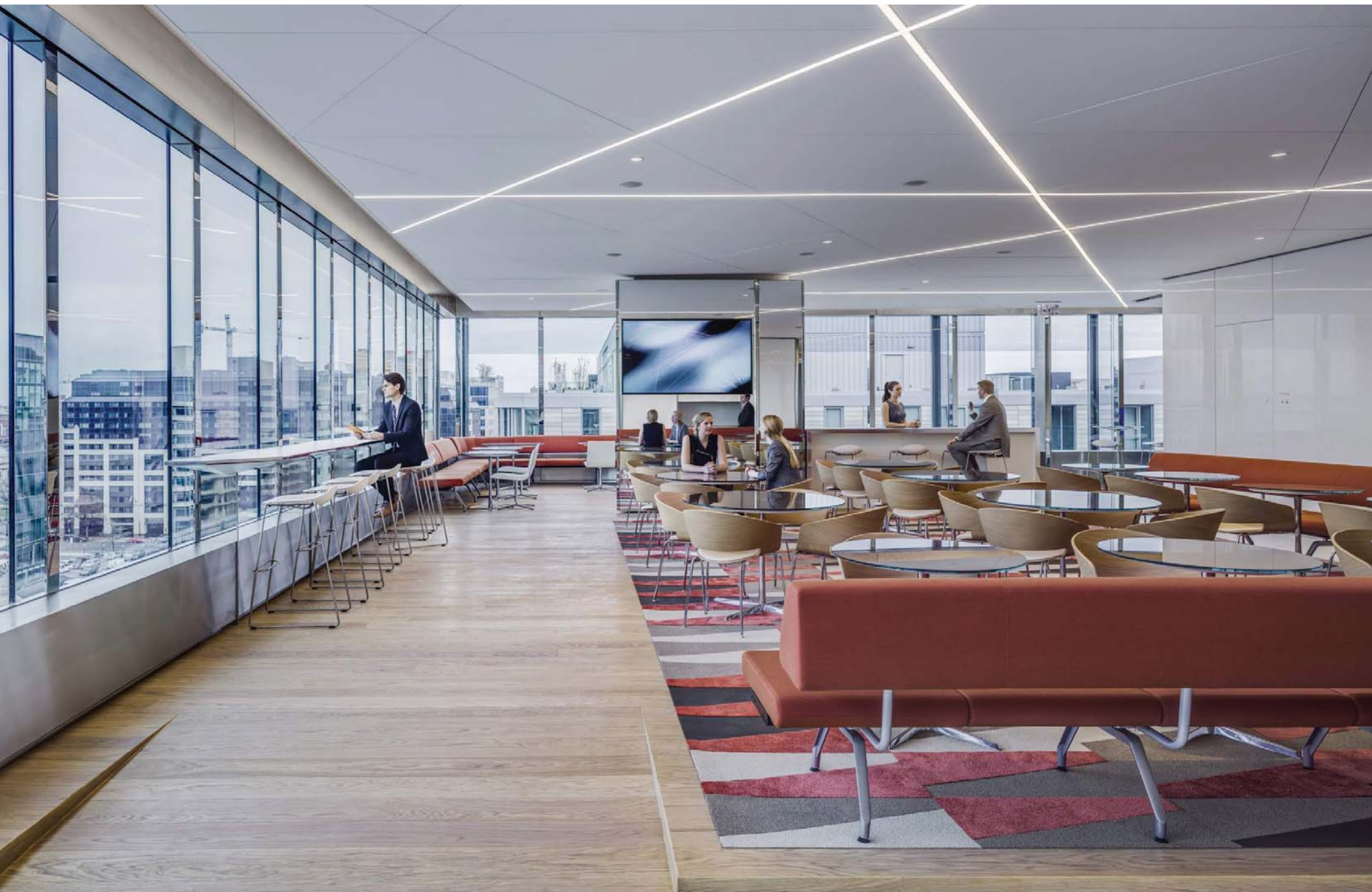


Five adjacent conference spaces can be opened or closed as needed to provide flexibility, seating anywhere from 20 to 250 people.





Level 10 cafe. The dynamic lighting design relates to the city grid of Washington and park below.





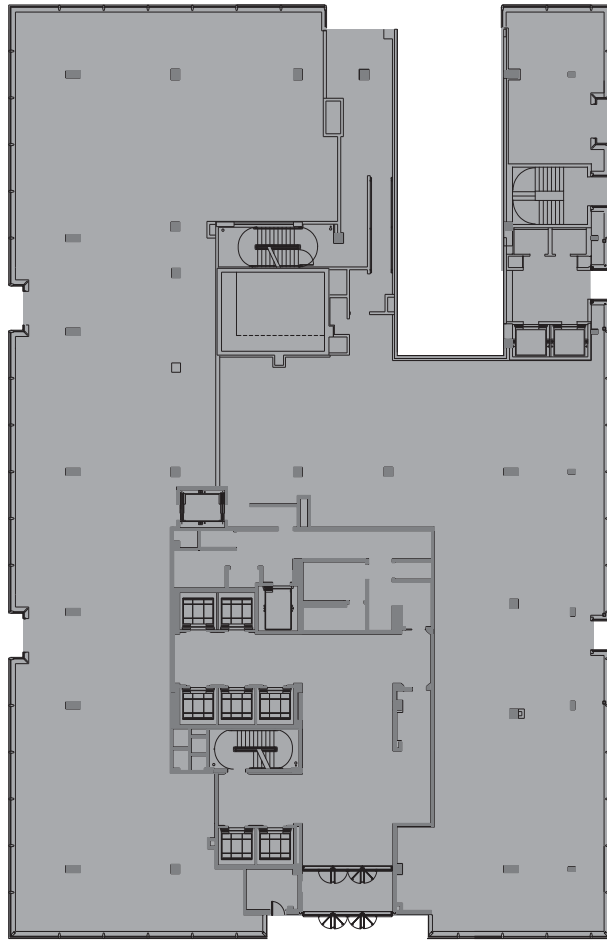




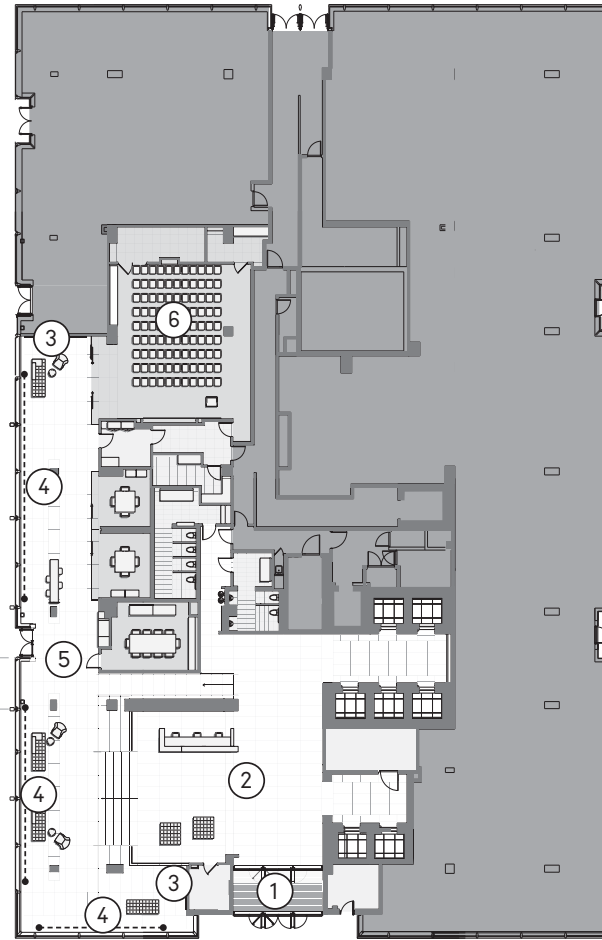




The atria and bridges engage the new development of CityCenter and provides daylight, energy, and collaboration for the entire project.



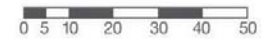
TWO CITYCENTER

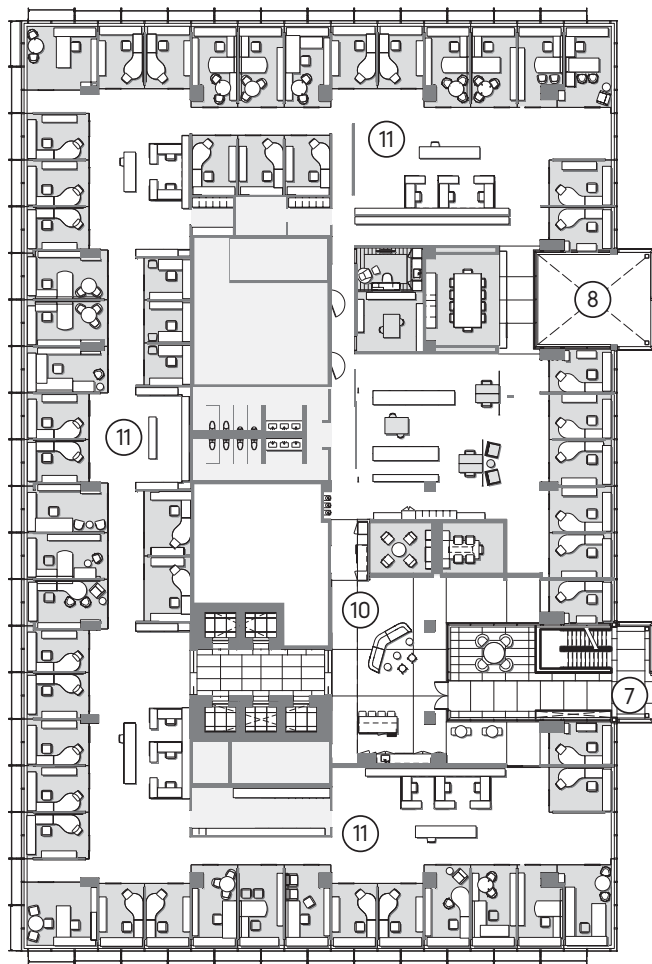


ONE CITYCENTER

LEVEL 1

- ① DEDICATED COVINGTON ENTRY
- ② LOBBY / RECEPTION
- ③ ART INSTALLATION / "PHYSI-CHROMIE," WALL PAINTING
- ④ ART INSTALLATION / "TRANSCRHOMIE," COLORED PLEXIGLASS FINS
- ⑤ RECEPTION GALLERY
- ⑥ AUDITORIUM





TWO CITYCENTER



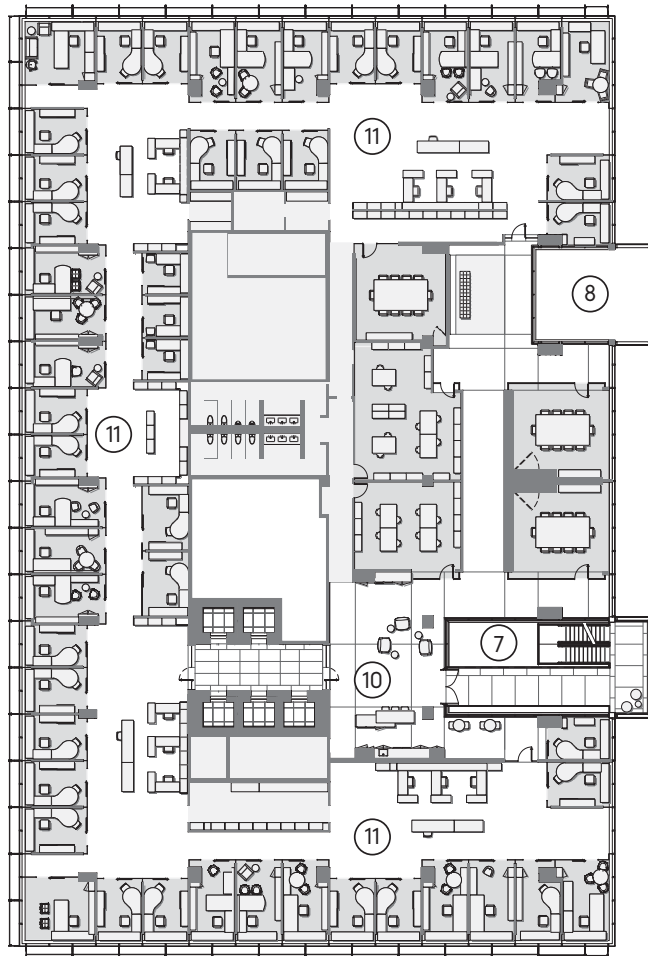
ONE CITYCENTER

LEVEL 9

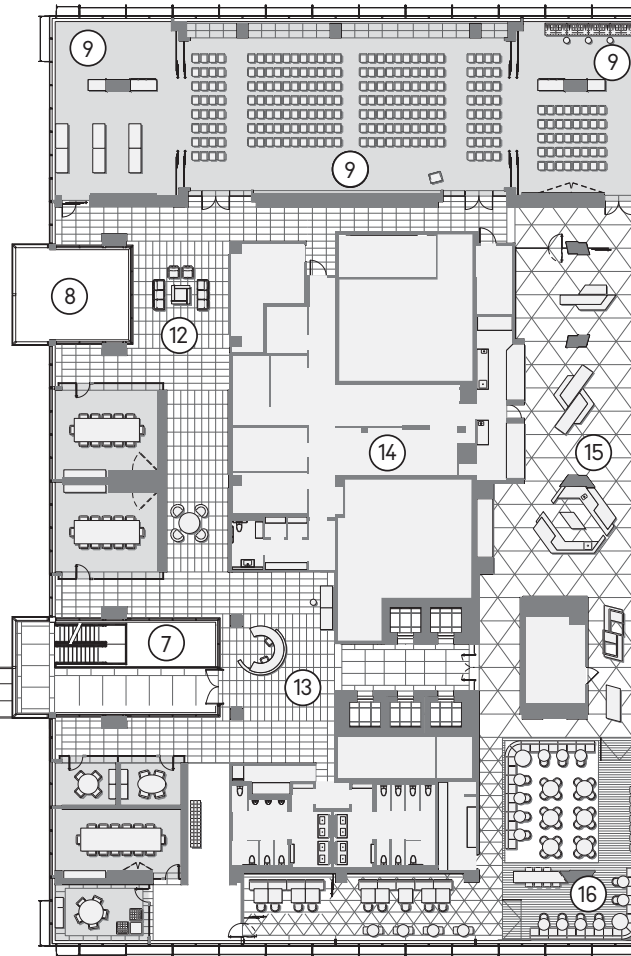
- ⑦ STAIR TOWER
- ⑧ ATRIUM
- ⑨ MULTI-PURPOSE ROOM
- ⑩ HUB
- ⑪ OFFICE AREA
- ⑫ PREFUNCTION
- ⑬ RECEPTION
- ⑭ KITCHEN
- ⑮ SERVING
- ⑯ DINING



0 5 10 20 30 40 50



TWO CITYCENTER



ONE CITYCENTER

LEVEL 10

- ⑦ STAIR TOWER
- ⑧ ATRIUM
- ⑨ MULTI-PURPOSE ROOM
- ⑩ HUB
- ⑪ OFFICE AREA
- ⑫ PREFUNCTION
- ⑬ RECEPTION
- ⑭ KITCHEN
- ⑮ SERVING
- ⑯ DINING



0 5 10 20 30 40 50