



Smithsonian Institution
National Museum of African American History and Culture

CORONA

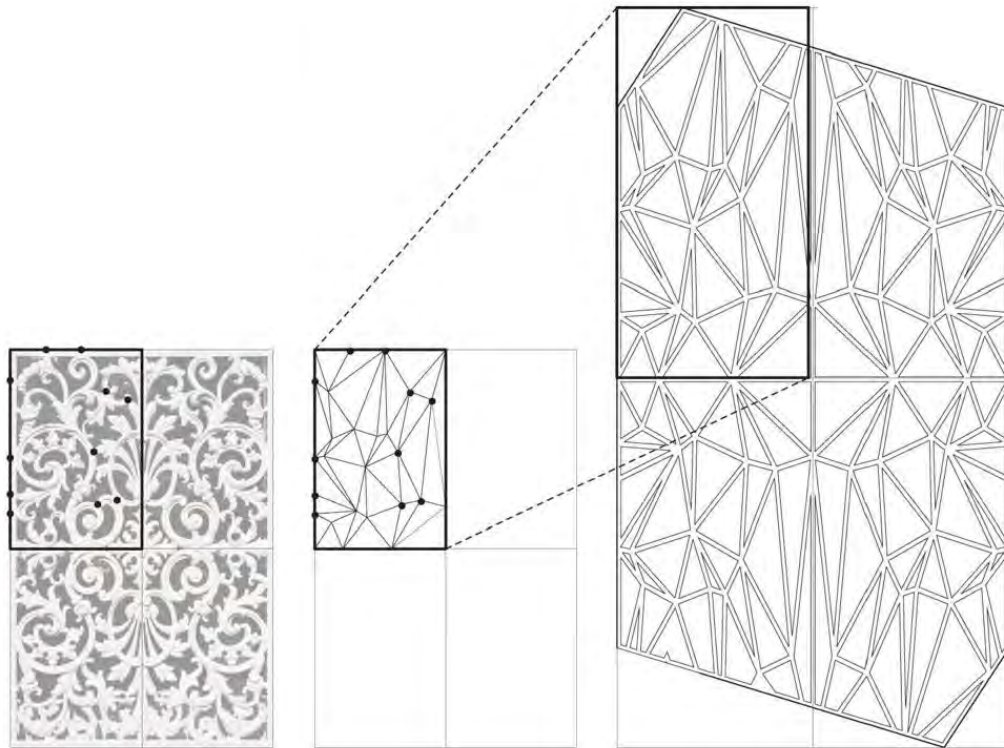
The building shape was inspired by the Yoruban caryatid, a traditional West African post or column. The crown/corona at the top of the caryatid was the key design driver for the Museum's three-tiered exterior form.

The corona form is based on elements of the Washington Monument, closely matching the 17-degree angle of the capstone.



SCREEN

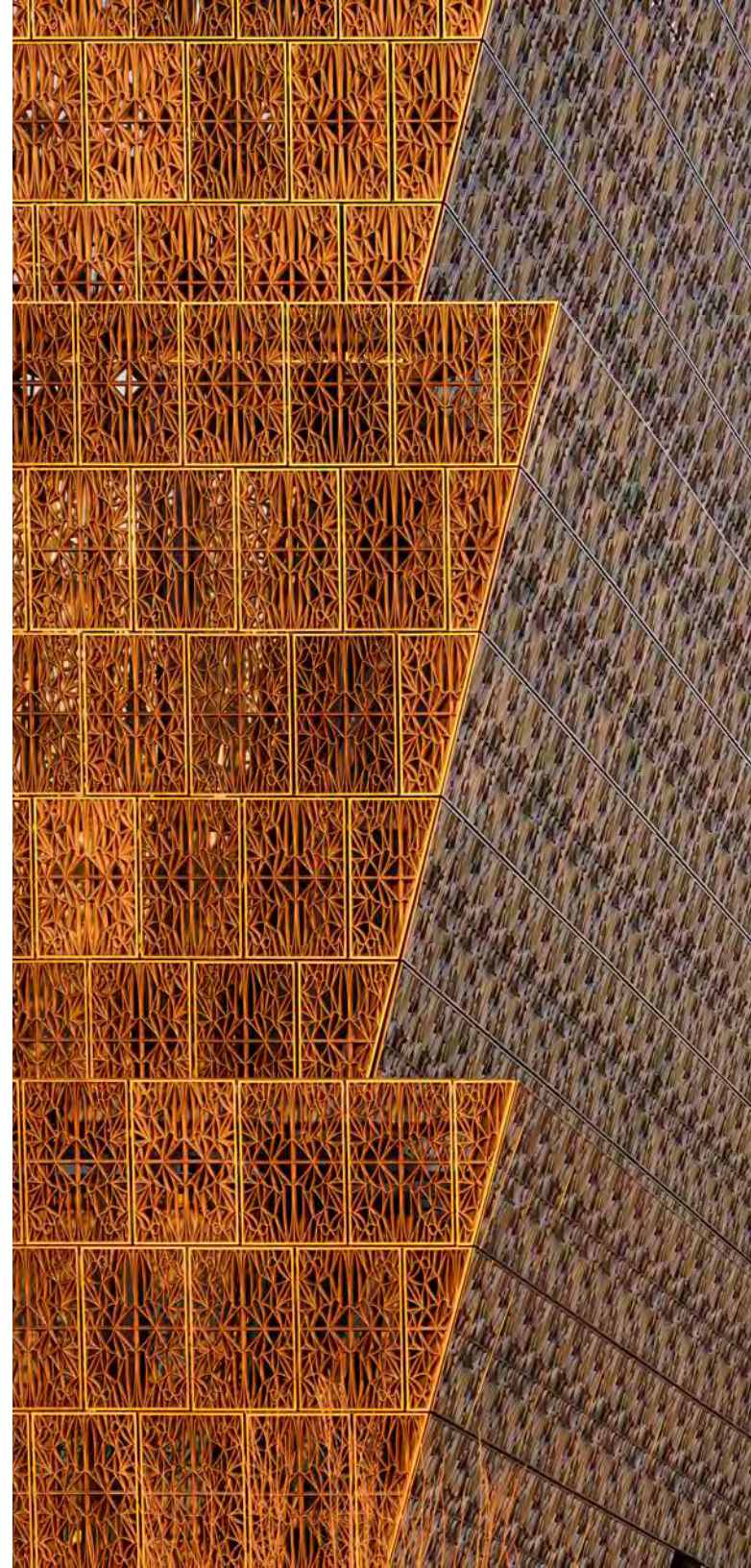
The pattern cast into the 3,600 bronze-colored corona panels alludes to the ornate ironwork found in southern cities such as Charleston, SC and New Orleans, LA. – ironwork typically designed and fabricated by Americans of African descent.



Nodes/welds

Triangulate

Abstracted Pattern

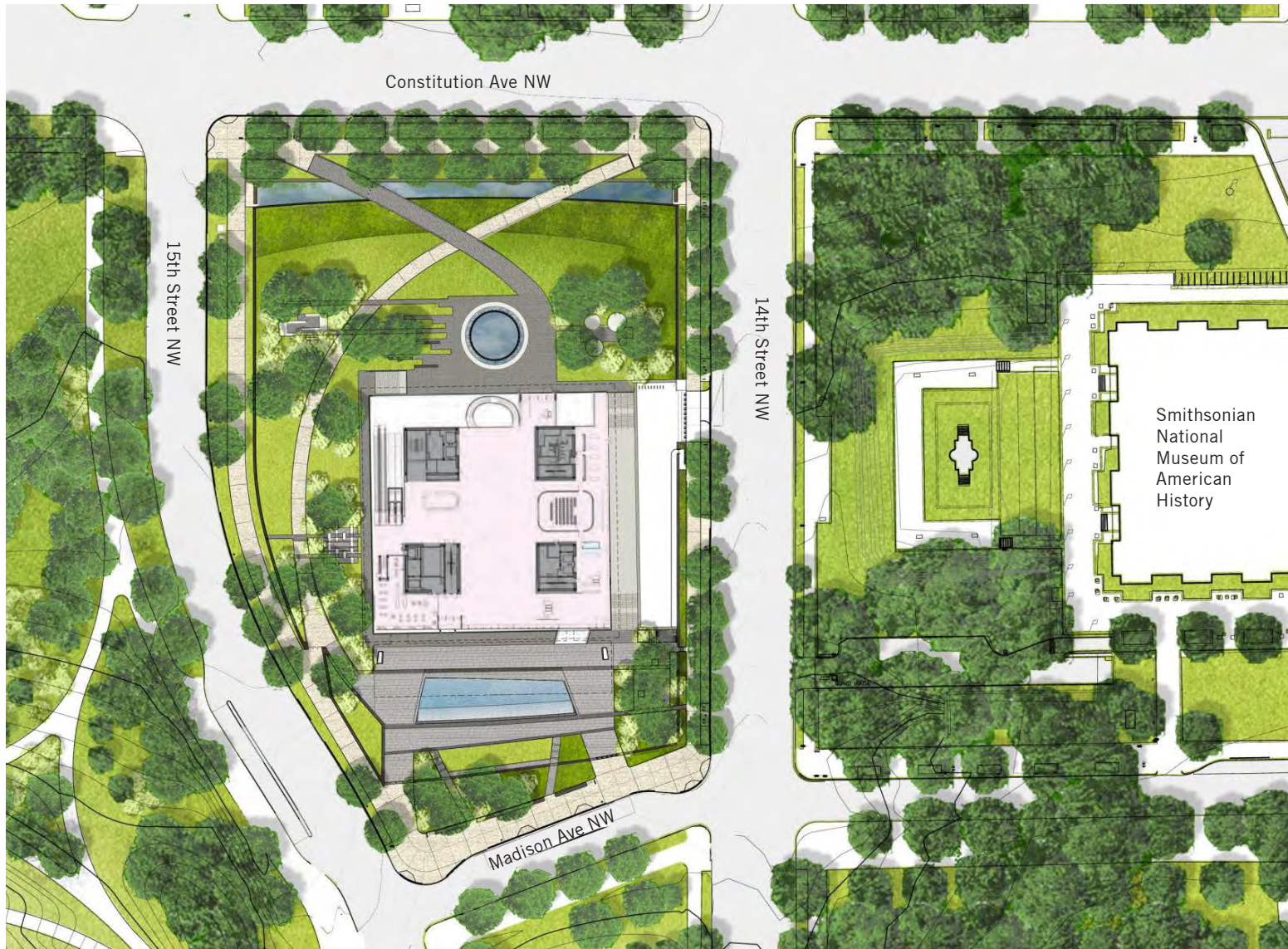
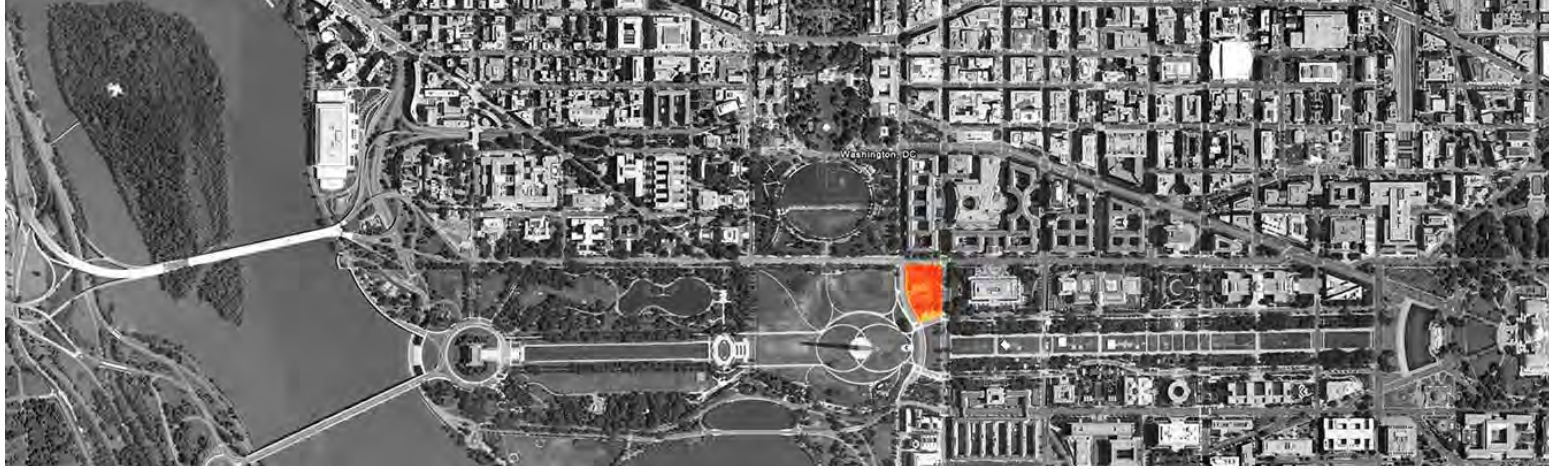




Second Floor Balcony

SITE

Located on the Mall's last buildable parcel, the Museum is positioned at the transition point between the highly ordered geometry of the National Mall and the pastoral grounds surrounding the Washington Monument. Responsive to both conditions, the building footprint is symmetrical - relating to the classical language of the mall.





Northeast Corner - View from 14th Street

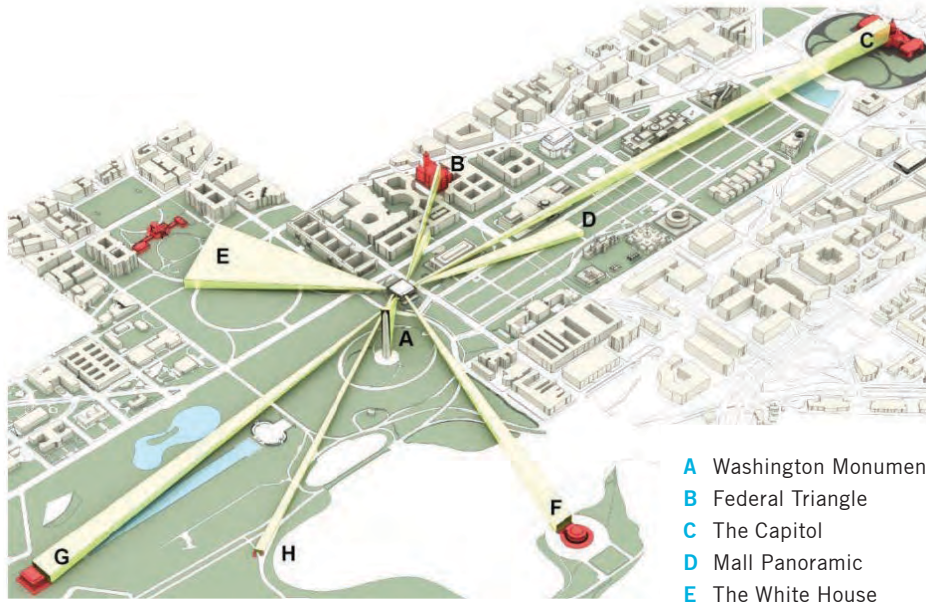
CATERING



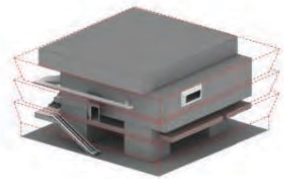
Areal View showing PV Panels and Green Roof

LENSES

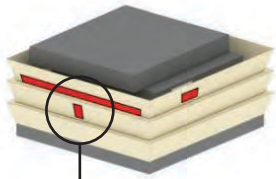
Apertures frame views to important landmarks on the National Mall.



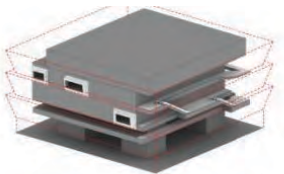
- A Washington Monument
- B Federal Triangle
- C The Capitol
- D Mall Panoramic
- E The White House
- F Jefferson Memorial
- G Lincoln Memorial
- H MLK Memorial



Southwest view



Washington Monument Lens (Shown on Right)



Northwest view



Washington Monument Lens

PORCH

Just as the front porch has historically been a meeting place for African Americans, the entry creates an outdoor room that bridges the gap between the interior and exterior, welcoming all who approach it from the National Mall.





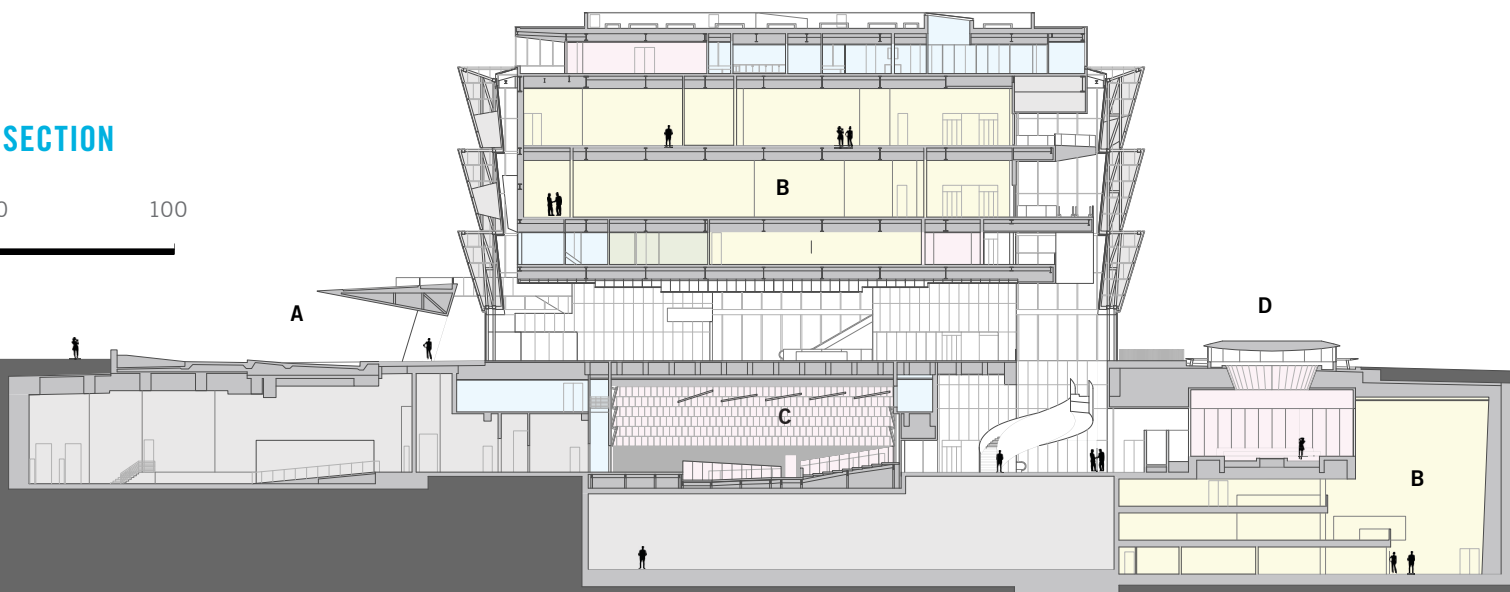
A. Entry Porch

B. Exhibits and Galleries

C. Theater

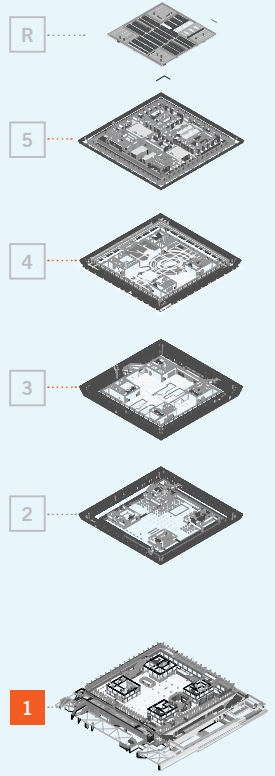
D. Oculus Above Contemplative Court

NORTH-SOUTH SECTION

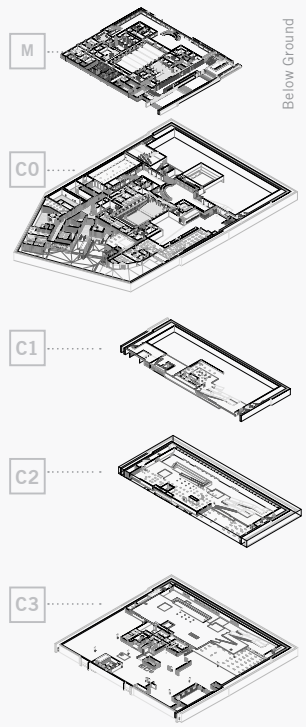




Porch View Towards Washington Monument

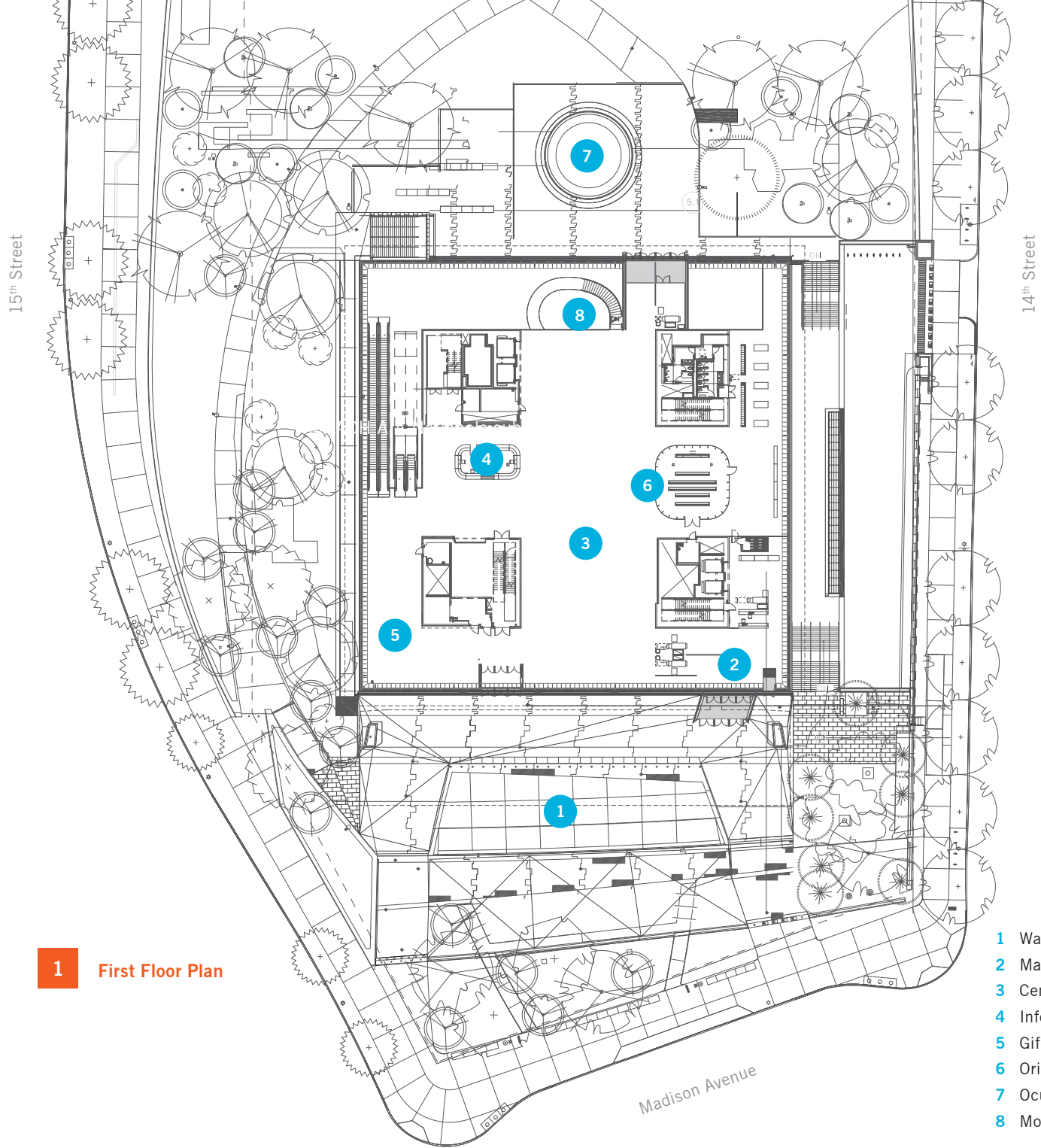


Above Ground



Below Ground

1 First Floor Plan

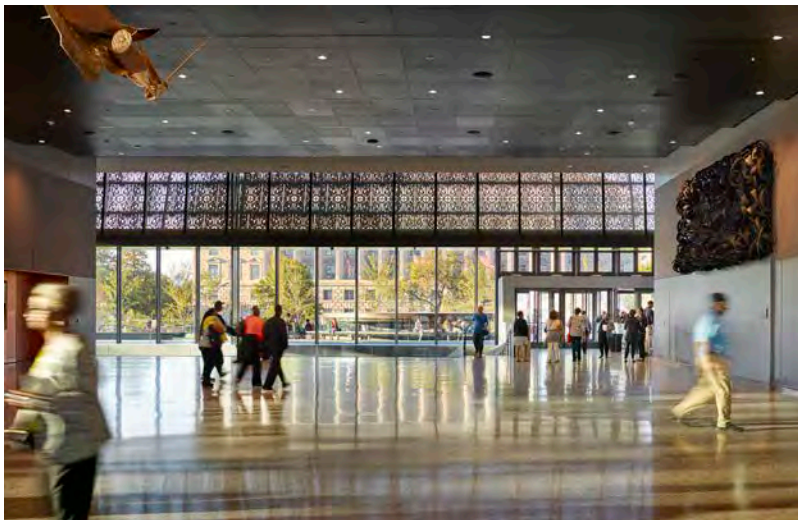


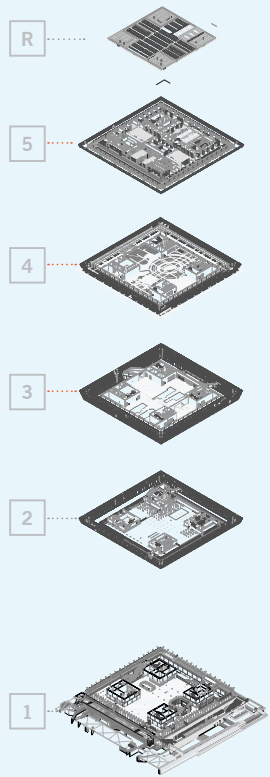
- 1 Water Feature
- 2 Main Entry
- 3 Central Hall
- 4 Information
- 5 Gift Shop
- 6 Orientation Theater
- 7 Oculus
- 8 Monumental Stair



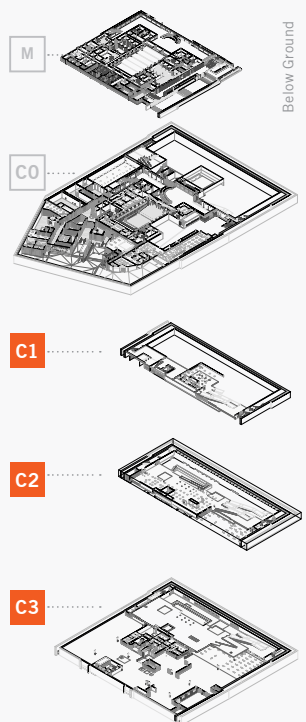
CENTRAL HALL

Inside, visitors are guided on a historical and emotional journey. The ground floor Central Hall immediately discloses the internal arrangement of the building – it is open and unrestricted, with 130-foot views up to the higher levels at the edges as well as down to the Concourse. The Central Hall therefore symbolizes the beginning of a journey.



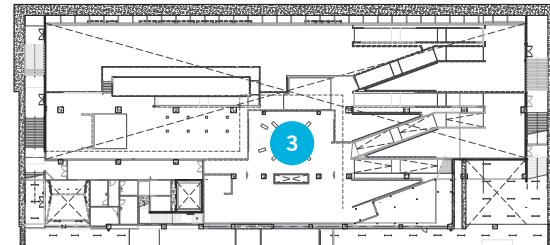


Above Ground

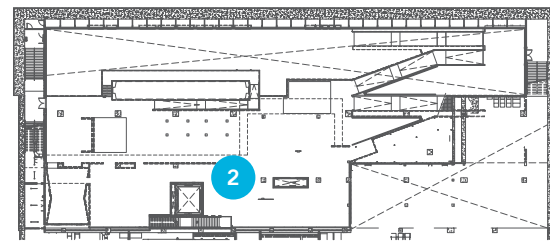


Below Ground

C1 Concourse 1



C2 Concourse 2



C3 Concourse 3

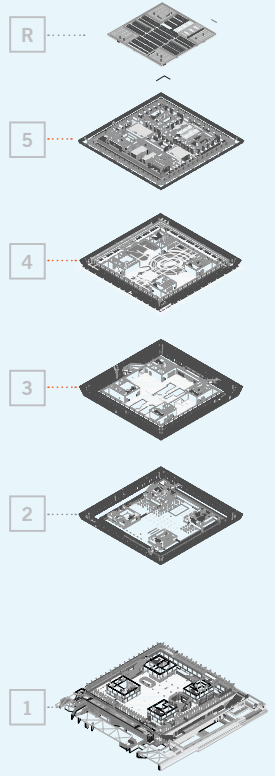


- 1 History Gallery (Slavery and Freedom)
- 2 History Gallery (Segregation)
- 3 History Gallery (Beyond 1968)

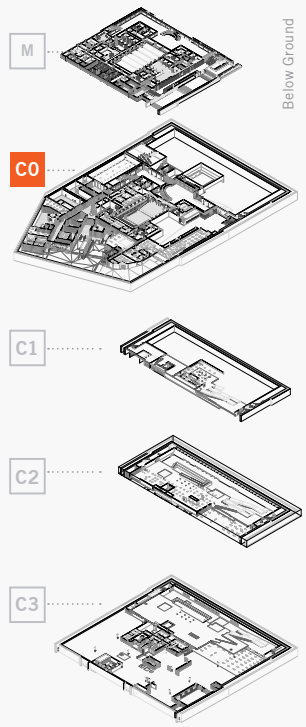


BELOW GROUND: HISTORY GALLERIES AND EXHIBITS



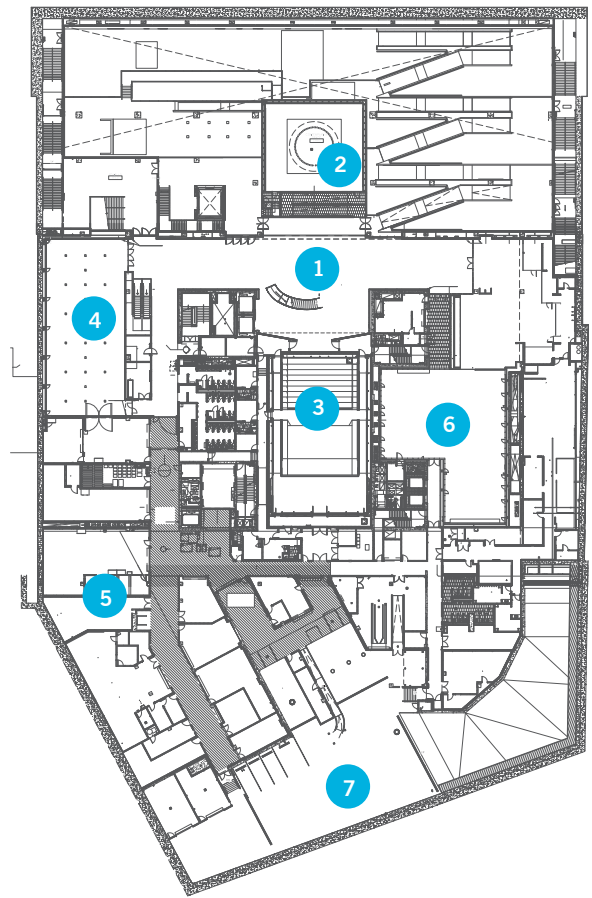


Above Ground



Below Ground

C0 Concourse 0



- 1 Atrium and Monumental Stair
- 2 Contemplative Court
- 3 Theater
- 4 Changing Gallery
- 5 Exhibit Prep and Storage
- 6 Cafeteria
- 7 Loading



ATRIUM AND MONUMENTAL STAIR





OPRAH WINFREY THEATER

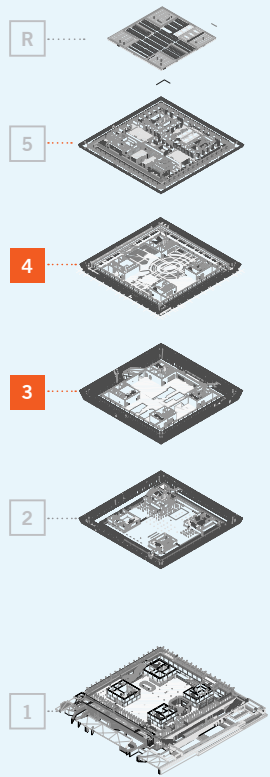
Entry to Theater at the Base of Monumental Stair



WE ARE DETERMINED... TO WORK AND FIGHT
UNTIL JUSTICE RUNS DOWN LIKE WATER AND
RIGHTEOUSNESS LIKE A MIGHTY STREAM.

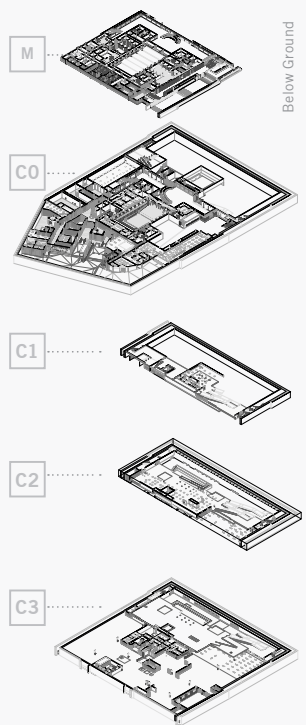
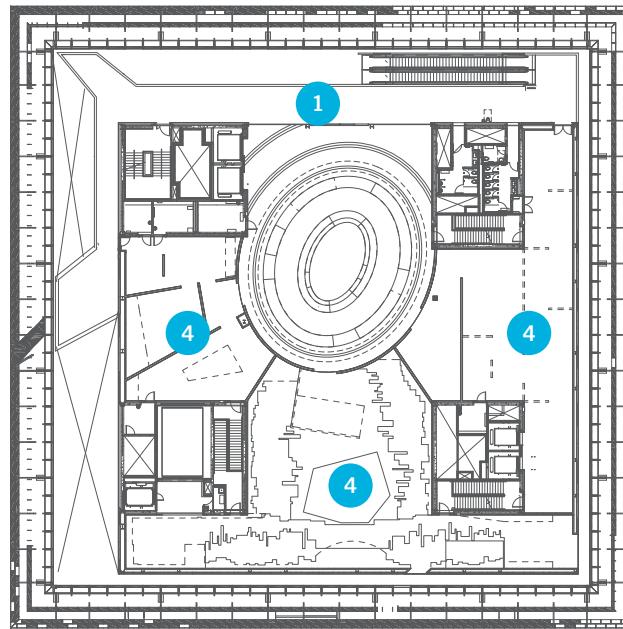
MARTIN LUTHER KING JR. 1955

Contemplative Court with Oculus Above



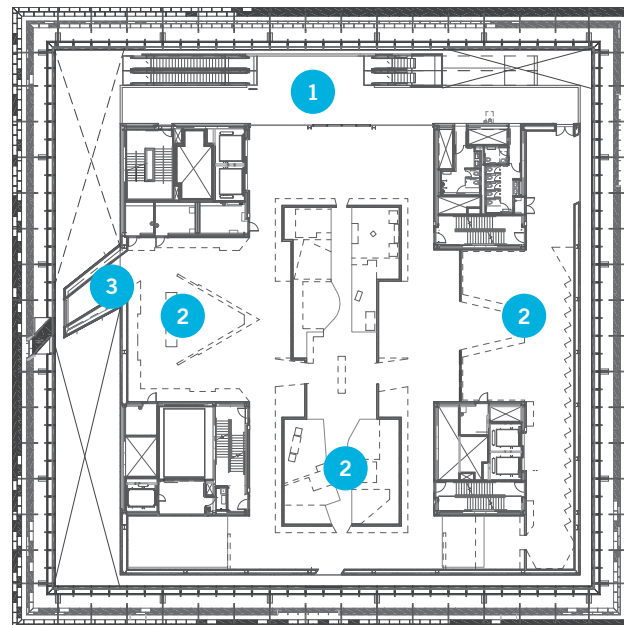
Above Ground

4 Fourth Floor Plan



Below Ground

3 Third Floor Plan



- 1 Circulation Balcony
- 2 Community Gallery
- 3 Military Lens Gallery
- 4 Culture Gallery





Circulation Balcony

ABOVE GROUND GALLERIES AND EXHIBITS





North Elevation at Dusk



South Elevation with Porch During Opening Ceremony